

Weekly Covid-19 Data Digest



February 2, 2021

Table of Contents

Local Data	Page 1	Vaccine Data	Page 32
Rankings/Risk Factors	Page 11	IHME Model	Page 33
CDC Information	Page 12	Reproduction Number Estimate	Page 35
DHEC Information	Page 26	Healthcare Activity Data	Page 36
US Interventions Model	Page 29	Resources	Page 36

Data included in this report compiled from publicly available sources. For more information or questions, please contact John Douglas, Chief of Business Development, at john.douglas@caresouth-carolina.com or 843-616-1471.

DHEC Reported Active Cases in Pee Dee by Zip Code (as of 1/30/21 at 11:59PM)

Chesterfield County			
Zip	Town	Cases	Per 1000 Pop
29520	Cheraw	133	9.72
29709	Chesterfield	75	11.30
29718	Jefferson	49	11.23
29101	McBee	48	15.81
29727	Mt. Croghan	14	7.88
29728	Pageland	93	9.74
29584	Patrick	35	15.53
29741	Ruby	10	4.27
Unknown or OOC Zip Code		20	N/A
County Total		477	10.45

Darlington County			
Zip	Town	Cases	Per 1000 Pop
29532	Darlington	295	14.44
29540	Darlington	62	13.70
29550	Hartsville	405	12.40
29069	Lamar	45	9.93
29593	Society Hill	19	12.46
Unknown or OOC Zip Code		50	N/A
County Total		876	13.15

Dillon County			
Zip	Town	Cases	Per 1000 Pop
29536	Dillon	186	11.06
29543	Fork	5	7.54
29547	Hamer	35	11.32
29563	Lake View	45	21.70
29565	Latta	61	8.15
29567	Little Rock	9	23.14
Unknown or OOC Zip Code		8	N/A
County Total		349	11.45

Lee County			
Zip	Town	Cases	Per 1000 Pop
29010	Bishopville	124	10.33
29046	Elliott	0	0.00
29080	Lynchburg	17	5.49
Unknown or OOC Zip Code		23	N/A
County Total		164	9.75

Marlboro County			
Zip	Town	Cases	Per 1000 Pop
29512	Bennettsville	169	9.51
29516	Blenheim	10	9.73
29525	Clio	30	14.21
29570	McColl	32	9.04
29594	Tatum	1	8.62
29596	Wallace	22	10.09
Unknown or OOC Zip Code		6	N/A
County Total		270	10.34

Florence County			
Zip	Town	Cases	Per 1000 Pop
29530	Coward	22	9.26
29541	Effingham	78	8.12
29501	Florence	328	7.11
29505	Florence	188	7.52
29506	Florence	159	7.78
29555	Johnsonville	55	9.55
29560	Lake City	182	13.49
29114	Olanta	20	11.88
29583	Pamplico	36	6.44
29591	Scranton	51	10.51
29161	Timmonsville	88	7.38
Unknown or OOC Zip Code		31	N/A
County Total		1238	8.95

Horry County			
Zip	Town	Cases	Per 1000 Pop
29511	Aynor	47	8.65
29526	Conway	405	8.40
29527	Conway	206	7.77
29544	Galivants Ferry	51	9.15
29545	Green Sea	11	6.77
29566	Little River	220	12.57
29568	Longs	141	8.74
29569	Loris	135	7.80
29572	Myrtle Beach	86	8.89
29575	Myrtle Beach	175	9.25
29577	Myrtle Beach	243	7.52
29579	Myrtle Beach	424	9.93
29588	Myrtle Beach	363	7.55
29582	N. Myrtle Beach	148	8.89
Unknown or OOC Zip Code		314	N/A
County Total		2969	8.39

* Note: zip codes extend beyond county borders so zip code totals and county totals will not match. "OOO Zip Code" indicates zip code from which post office is physically located in adjacent county.

Equal or less cases than previous report
More cases than previous report

Marion County

Zip	Town	Cases	Per 1000 Pop
29519	Centenary	0	0.00
29546	Gresham	11	3.88
29571	Marion	135	9.13
29574	Mullins	94	8.79
29581	Nichols	2	0.45
29592	Sellers	3	4.06
Unknown or OOC Zip Code		2	N/A
County Total		247	8.06

Counties Ranked by Active Cases Per 1000 Pop.

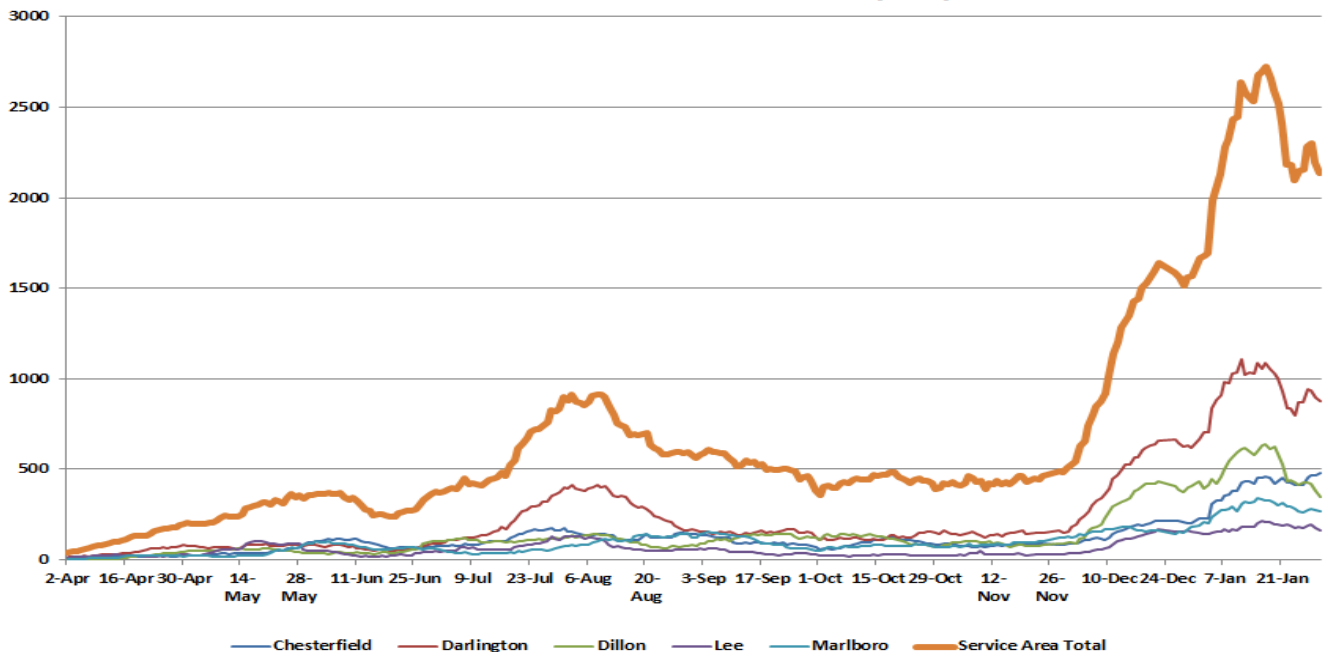
Rank	County	Cases	Per 1000
1	Darlington	876	13.15
2	Dillon	349	11.45
3	Chesterfield	477	10.45
4	Marlboro	270	10.34
5	Lee	164	9.75
6	Florence	1238	8.95
7	Marion	247	8.06

Top Zip Codes by Active Cases Per 1000 Pop.

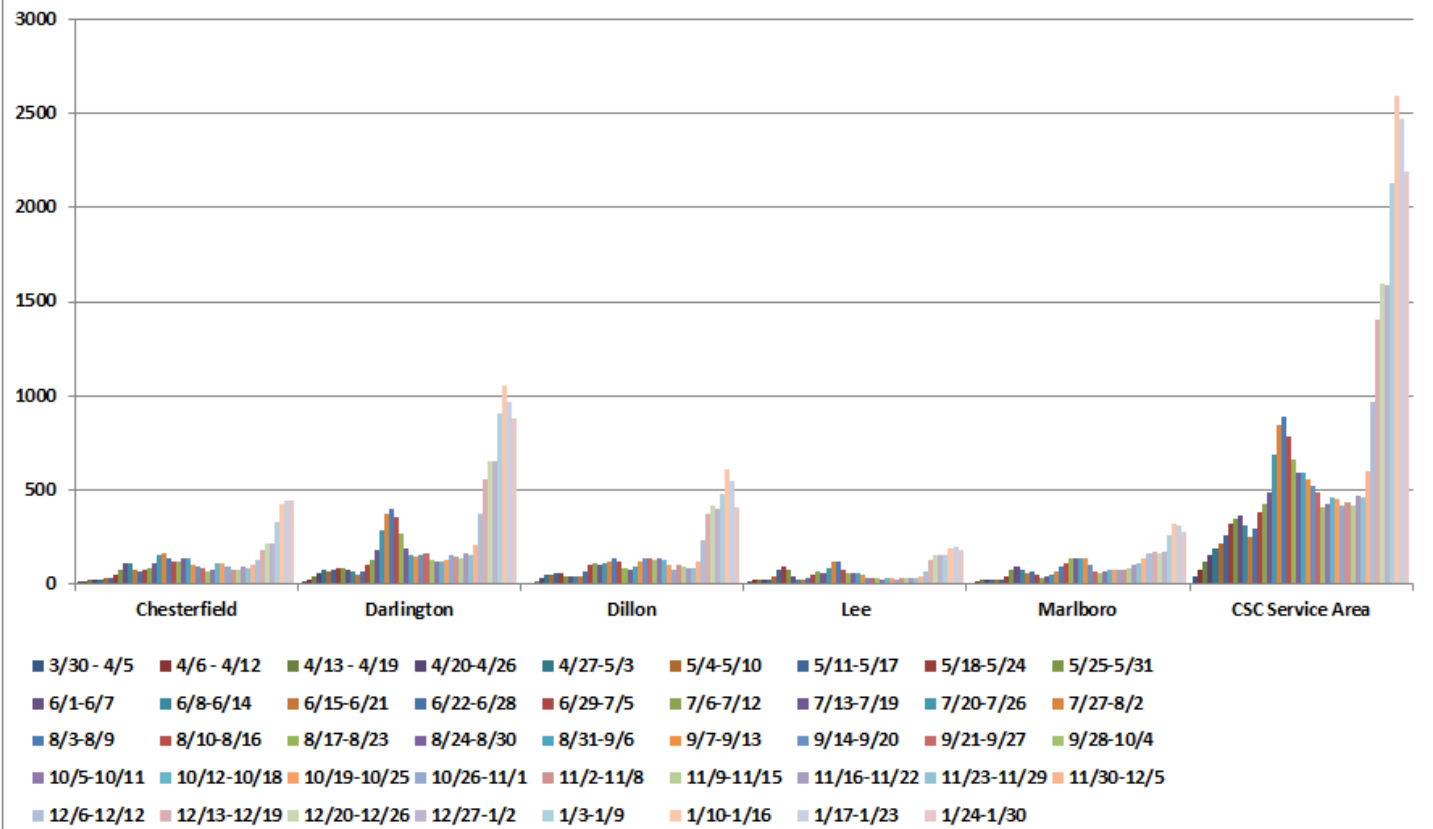
Rank	Town (Zip Code)	Cases	Per 1000
1	Little Rock (29567)	11	28.28
2	Lake View (29563)	58	27.97
3	Olanta (29114)	35	20.80
4	Darlington (29540)	83	18.33
5	Clio (29525)	38	18.00
6	Lake City (29560)	230	17.05
7	Patrick (29584)	38	16.86
8	Darlington (29532)	293	14.34
9	Dillon (29536)	230	13.67
10	Society Hill (29593)	20	13.11
11	Green Sea (29545)	21	12.92
12	Scranton (29591)	62	12.78
13	N. Myrtle Beach (29582)	211	12.67
14	Little River (29566)	221	12.63
15	Marion (29571)	183	12.37

Top Ten Zip Codes by Total Active Cases

Rank	Town (Zip Code)	Cases	Per 1000
1	Myrtle Beach (29579)	424	9.93
2T	Conway (29526)	405	8.40
2T	Hartsville (29550)	405	12.40
4	Myrtle Beach (29588)	363	7.55
5	Florence (29501)	328	7.11
6	Darlington (29532)	295	14.44
7	Myrtle Beach (29577)	243	7.52
8	Little River (29566)	220	12.57
9	Conway (29527)	206	7.77
10	Florence (29505)	188	7.52
11	Dillon (29536)	186	11.06
12	Lake City (29560)	182	13.49
13	Myrtle Beach (29575)	175	9.25
14	Bennettsville (29512)	169	9.51
15	N. Myrtle Beach (29582)	148	8.89

Active Cases in CSC Service Area by Day

Active Cases by Weekly Average in CSC Service Area



COVID-19 TOTAL CUMULATIVE CASES COMPARISON DATA (as of January 31, 2021)

Geographic Unit	Population	Cases	Weekly Change	Previous Week Chg.	Cases Per 100 Pop.	Rate Exceeds: State*	Nation	World
Anson County, NC	25,289	2,046	104	153	8.09	Yes	Yes	Yes
Chesterfield County	45,650	3,470	269	250	7.60	No	No	Yes
Columbus County, NC	56,220	5,187	294	345	9.23	Yes	Yes	Yes
Darlington County	66,618	7,004	507	413	10.51	Yes	Yes	Yes
Dillon County	30,479	3,543	151	204	11.62	Yes	Yes	Yes
Florence County	138,293	15,102	558	758	10.92	Yes	Yes	Yes
Horry County	354,081	29,166	1,477	1,888	8.24	No	Yes	Yes
Kershaw County	66,551	5,626	361	370	8.45	No	Yes	Yes
Lancaster County	98,012	7,920	530	543	8.08	No	Yes	Yes
Lee County	16,828	1,629	85	82	9.68	Yes	Yes	Yes
Marion County	30,657	2,897	115	134	9.45	Yes	Yes	Yes
Marlboro County	26,118	2,646	129	159	10.13	Yes	Yes	Yes
Richmond County, NC	44,993	3,682	192	222	8.18	Yes	Yes	Yes
Robeson County, NC	130,529	13,424	595	814	10.28	Yes	Yes	Yes
Scotland County, NC	35,690	3,172	78	132	8.89	Yes	Yes	Yes
Sumter County	106,721	8,191	539	597	7.68	No	No	Yes
Union County, NC	242,657	18,345	883	1,278	7.56	Yes	No	Yes
South Carolina	5,148,714	445,916	24,499	29,953	8.66	N/A	Yes	Yes
North Carolina	10,630,691	761,302	37,857	48,808	7.16	N/A	No	Yes
United States	330,300,890	26,034,475	1,015,955	1,364,601	7.88	N/A	N/A	Yes
World	7,681,651,842	103,818,578	3,590,494	4,251,907	1.35	N/A	N/A	N/A

* Compared to state in which county is located

*** Weekly Change -- Red indicates more new cases than previous weekly period, green indicates same or less (change includes those reclassified to a new location)

*** CAUTION -- Reporting reliability varies widely from country to country -- comparison based on total world population with uncertain validity of case reporting.

**** Weekly changes may not match from previous week report due to changes/corrections made by reporting agencies.

*****SC figures include probable cases as defined by DHEC.

Long Term Care Facility Cases Within Past 30 Days

County	Facility	Resident	Staff
Chesterfield	Cheraw Healthcare	1	3
Chesterfield	Rehab Center of Cheraw	1	0
Darlington	Bethea Baptist Health Care Center	3	1
Darlington	Carriage House Senior Living	0	1
Darlington	Morrell Nursing Center	1	5
Darlington	Oakhaven Nursing Center	5	3
Darlington	Thad E. Saleeby Developmental Center	57	34
Dillon	Carlyle Senior Care of Fork	1	2
Dillon	Pruitt Health - Dillon	0	1
Dillon	Thorne Retirement Home	26	1
Lee	McCoy Memorial Nursing Center	2	3
Marlboro	Dundee Manor	24	8

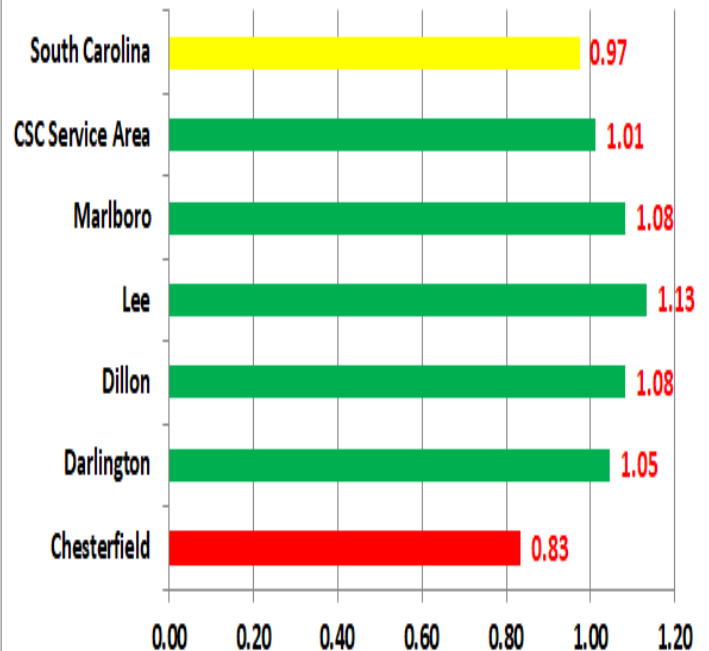
* as reported by DHEC as of 1/27/21

Schools With Cases Within Past 30 Days

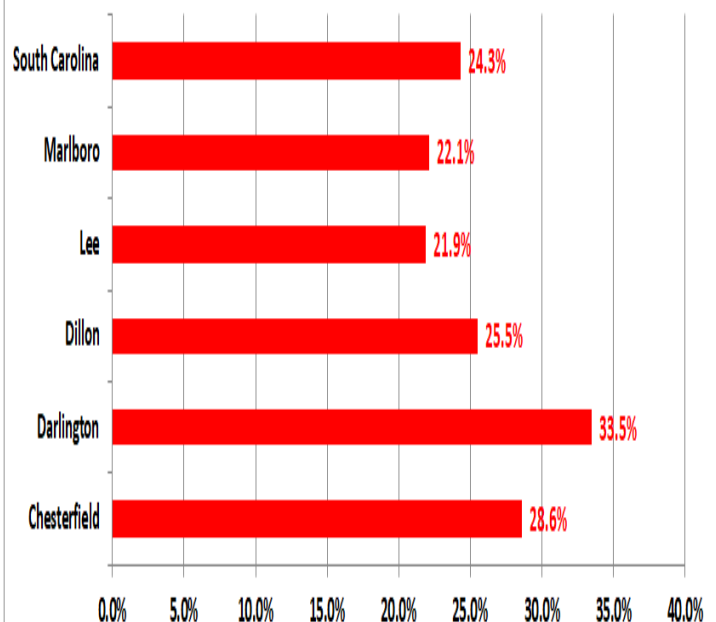
County	School	Student	Faculty
Chesterfield	Cheraw High	<5	<5
Chesterfield	Cheraw Intermediate	0	<5
Chesterfield	Chesterfield High	<5	<5
Chesterfield	McBee High	<5	0
Chesterfield	Pageland Elementary	<5	0
Chesterfield	Petersburg Primary	<5	0
Chesterfield	Plainview Elementary	<5	0
Chesterfield	Ruby Elementary	<5	0
Chesterfield	South Pointe Christian	<5	0
Darlington	Darlington High	0	<5
Darlington	North Hartsville Elementary	0	<5
Darlington	Pate Elementary	<5	0
Darlington	Temple Christian	<5	0
Darlington	Thomas Hart Academy	0	<5
Darlington	Trinity Collegiate	6	0
Dillon	Dillon Christian	5	0
Dillon	Dillon High	<5	<5
Dillon	Dillon Middle	7	<5
Dillon	East Elementary	<5	<5
Dillon	Gordon Elementary	<5	0
Dillon	Lake View Elementary	<5	0
Dillon	Lake View High	<5	<5
Dillon	Latta Elementary	6	<5
Dillon	Latta High	<5	<5
Dillon	Latta Middle	6	0
Dillon	South Elementary	0	<5

* as reported by DHEC as of 1/27/21

Cumulative Tests Per Capita*

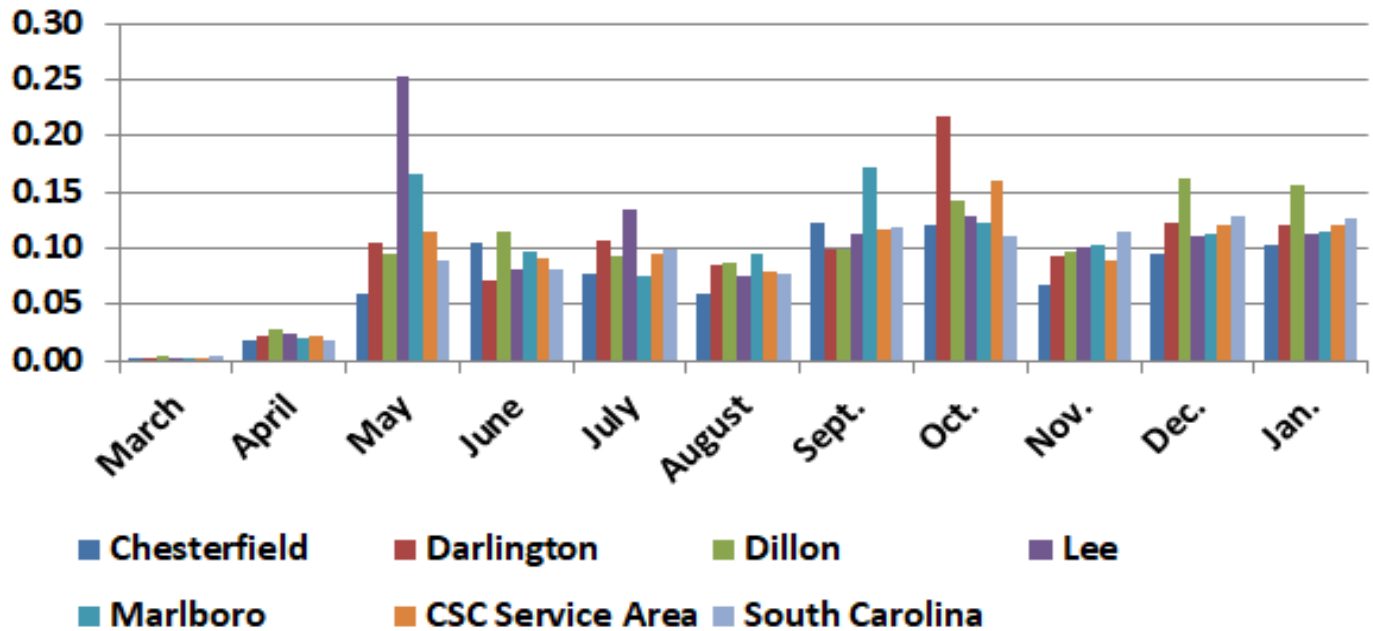


7 Day Average Positivity Rate

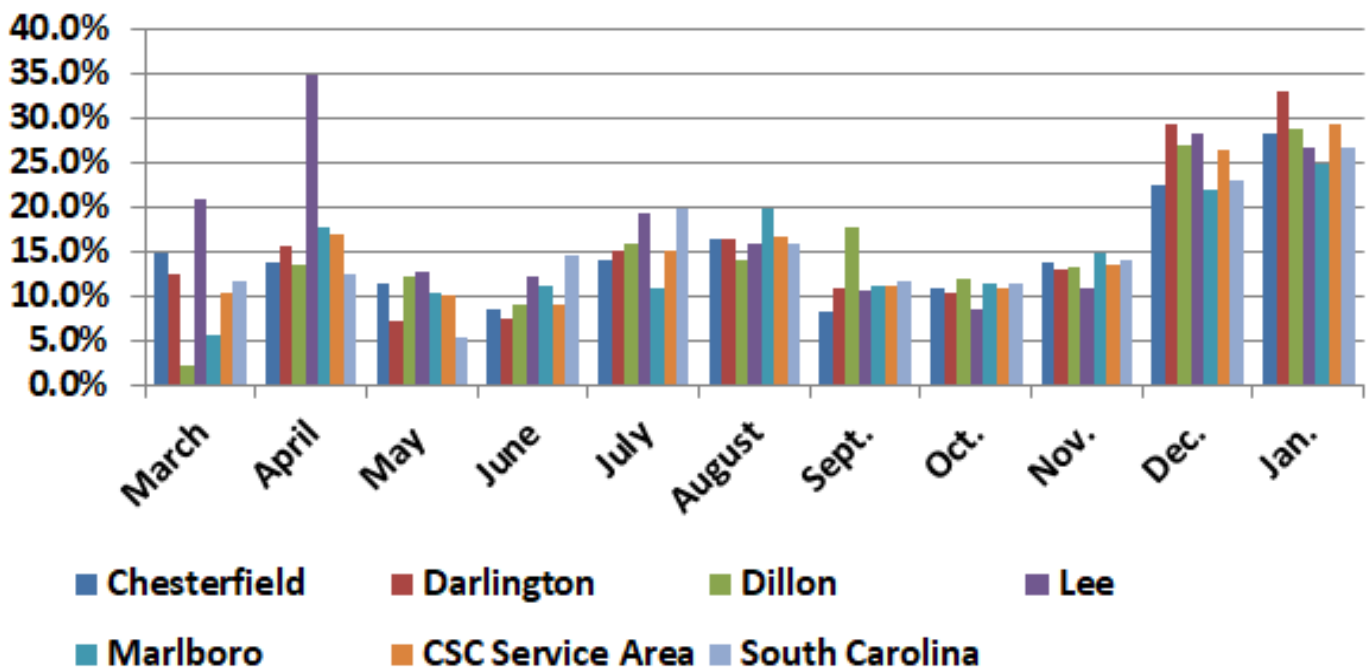


*Tests as percentage of total population. Includes repetitive testing on same individual.

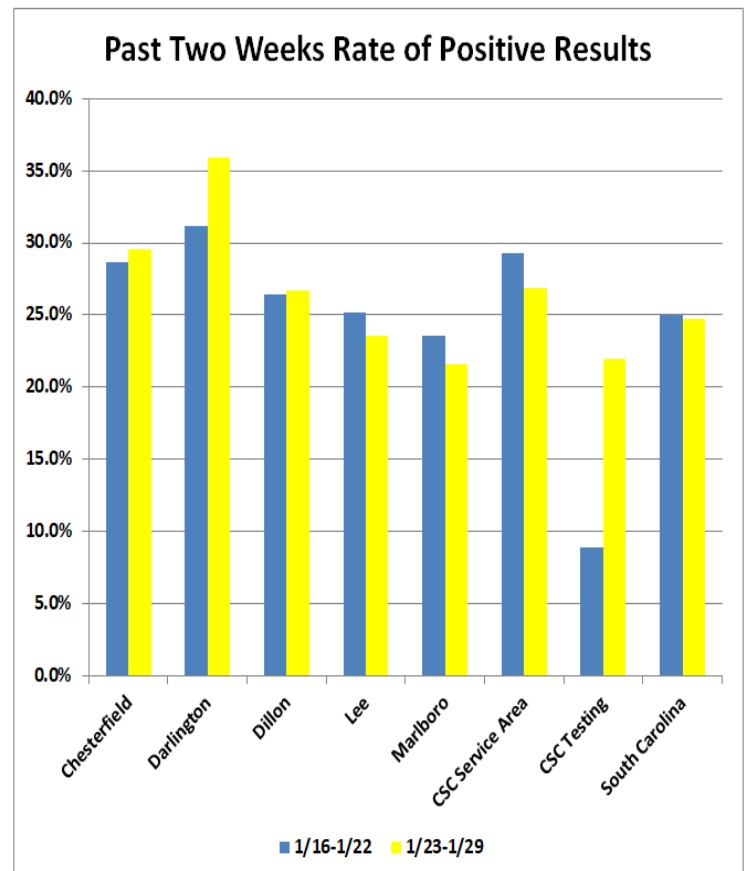
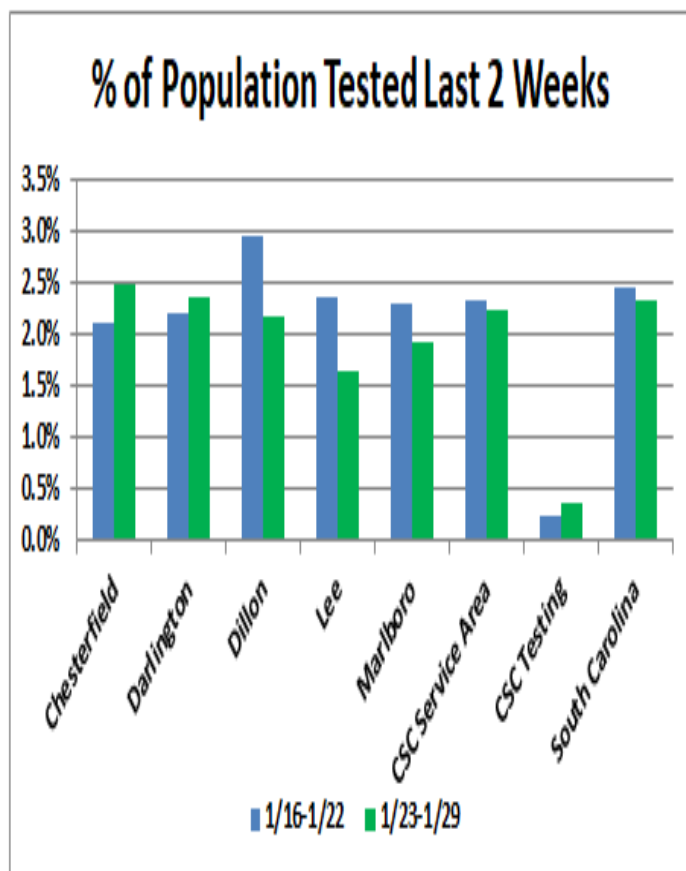
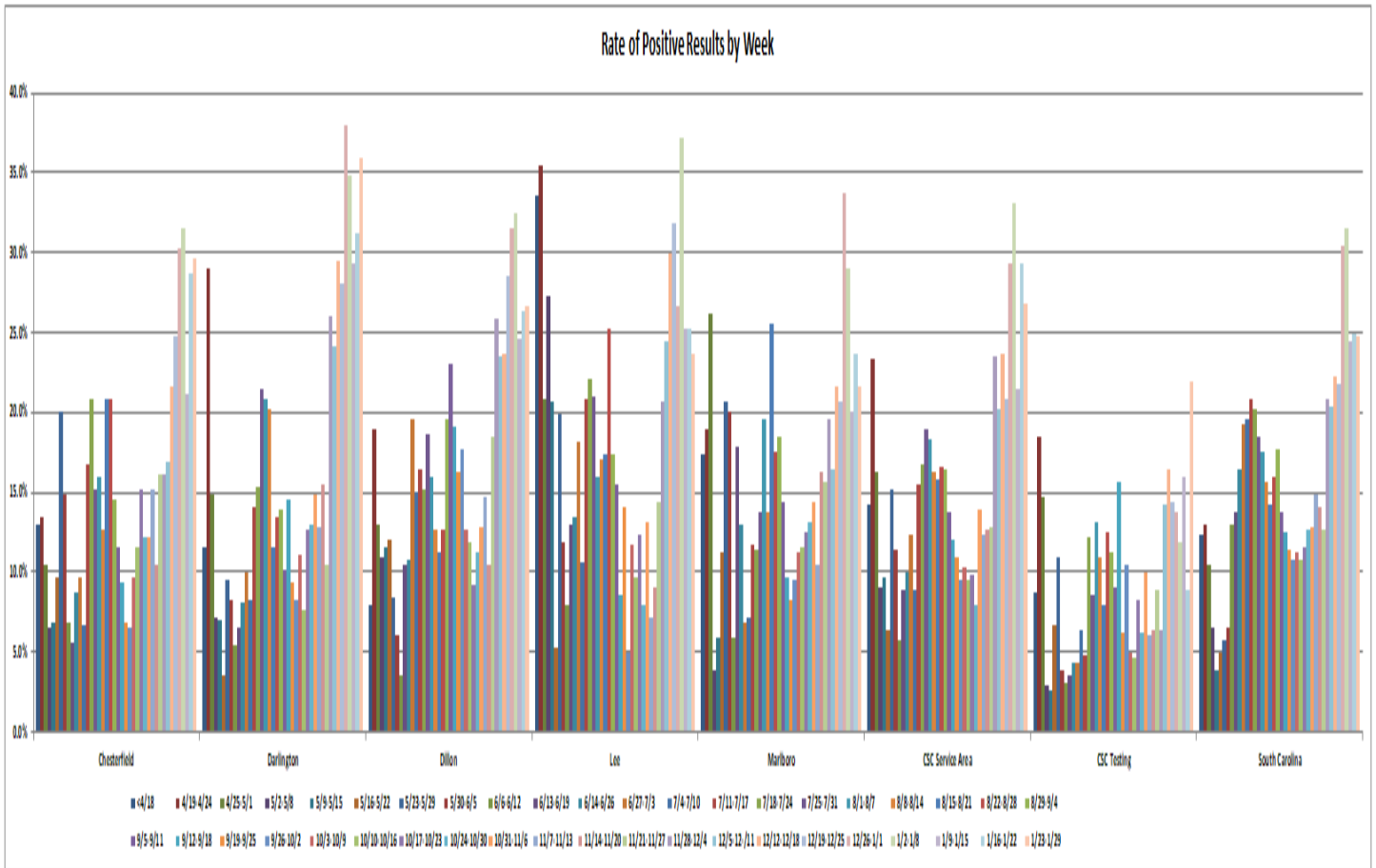
Tests Per Capita by Month*



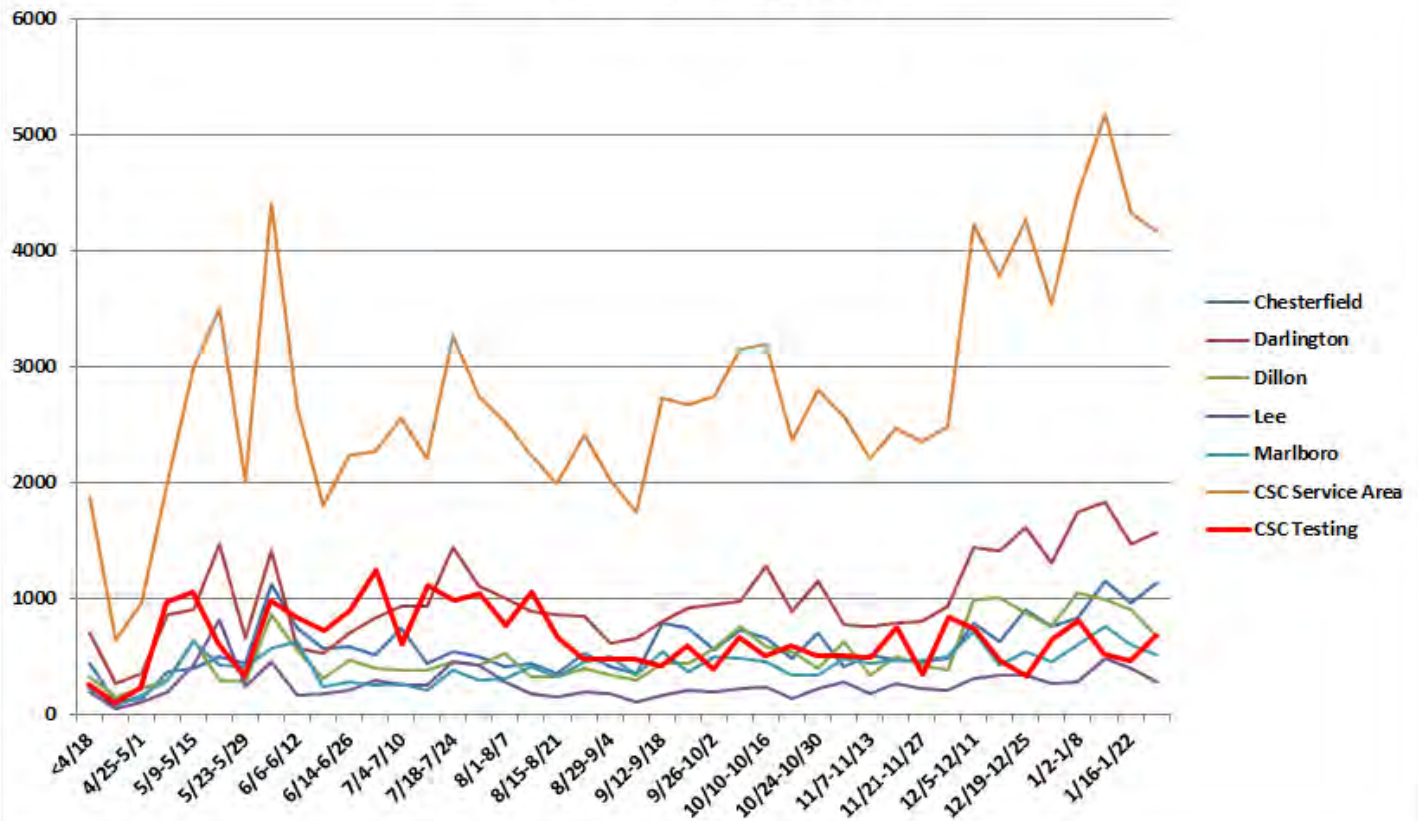
Positivity Rate by Month



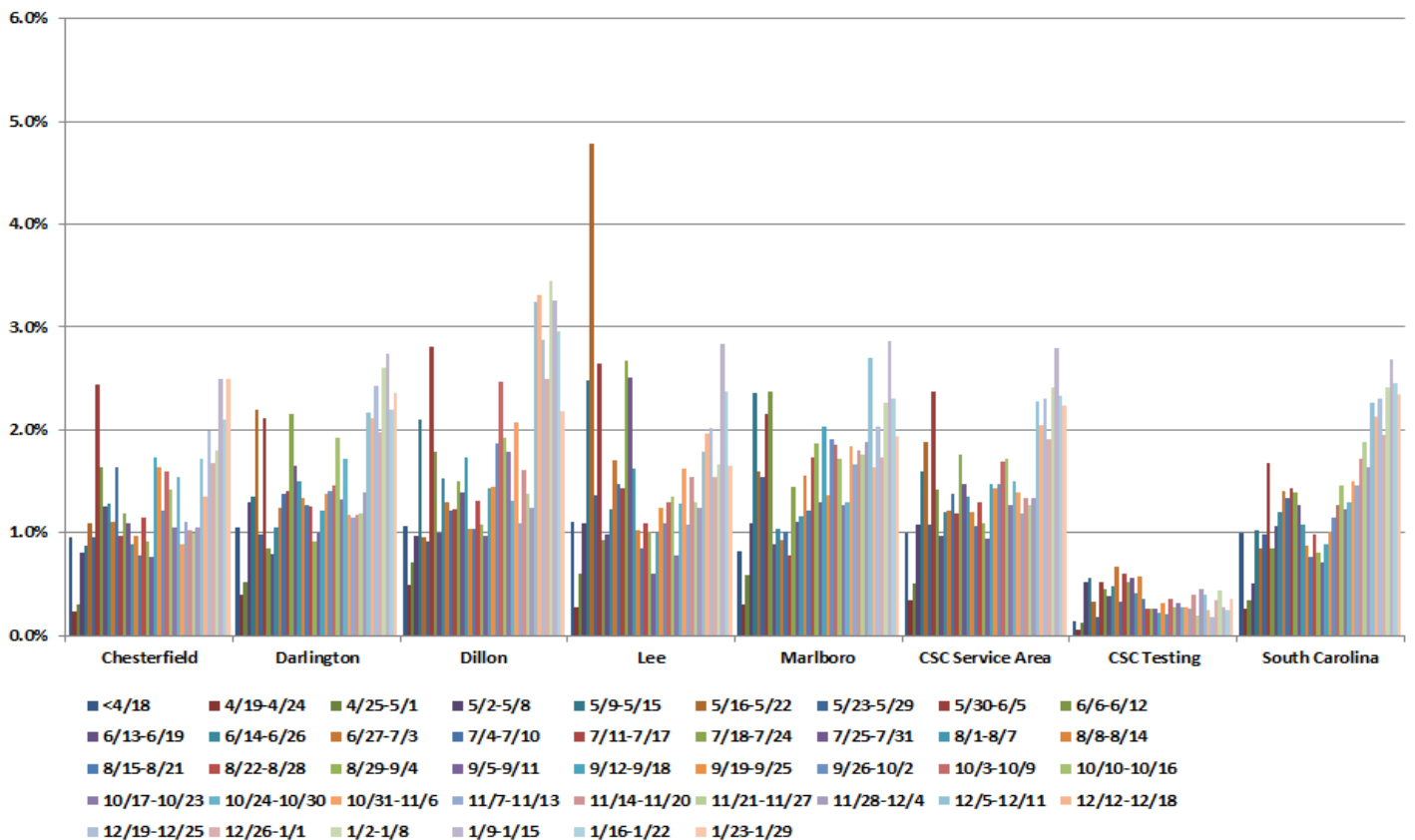
* Incomplete month prorated for complete month comparison. Tests as percentage of total population. Includes repetitive testing on same individual.



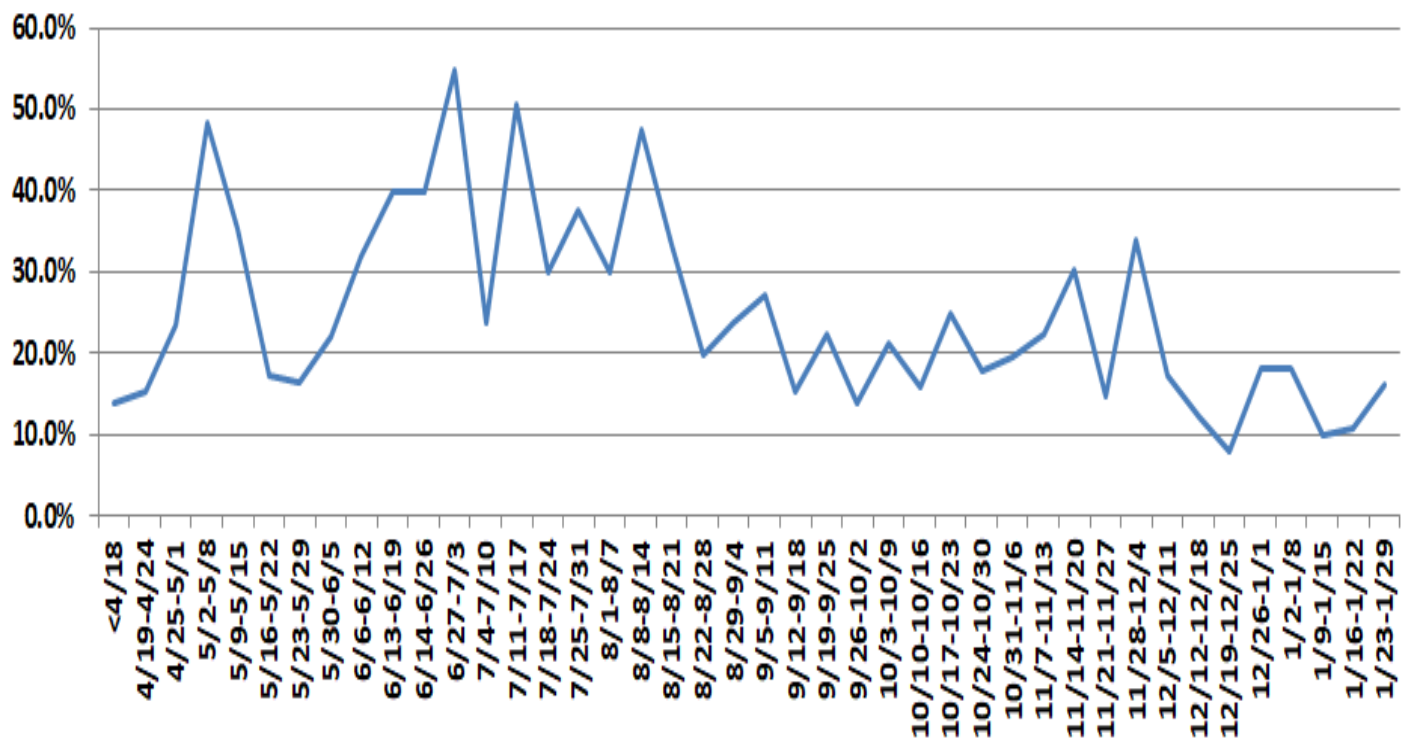
Total Testing by Week



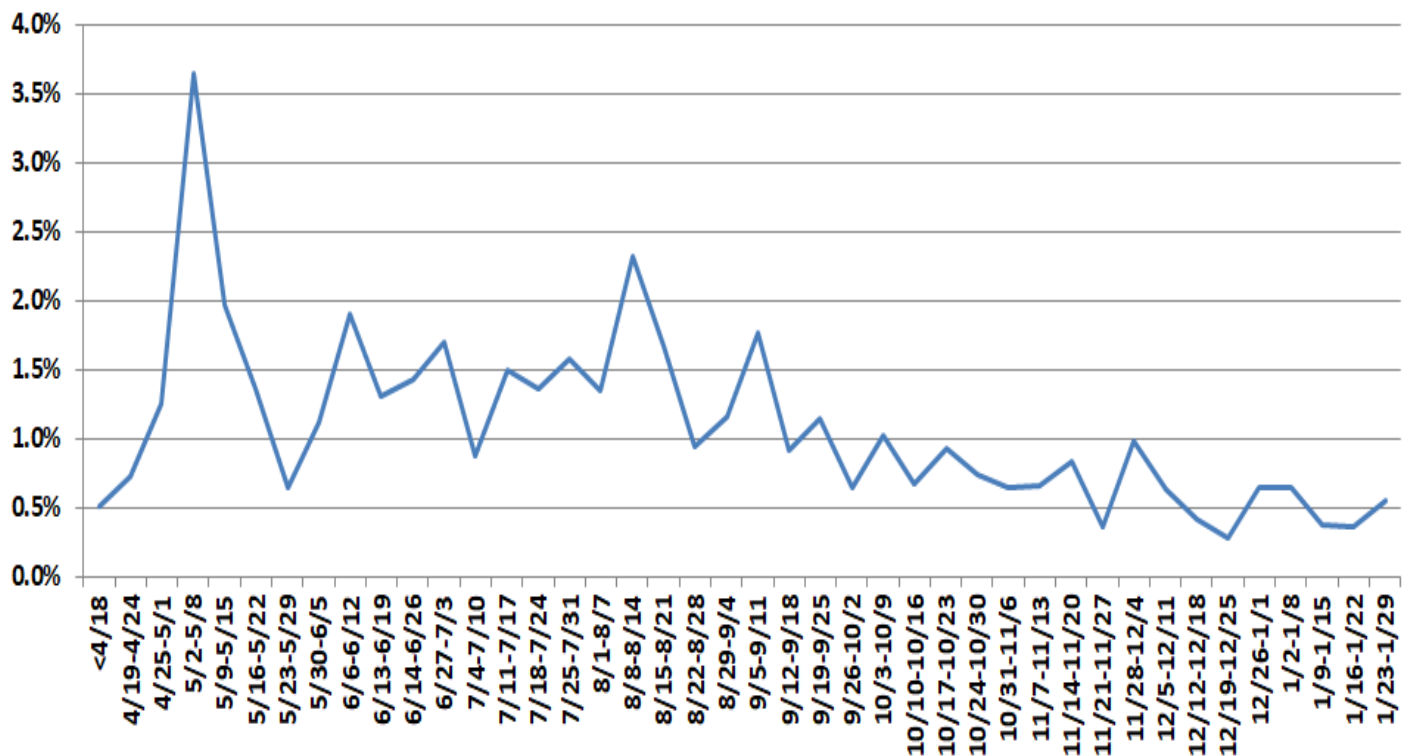
Percent of Population Tested by Week



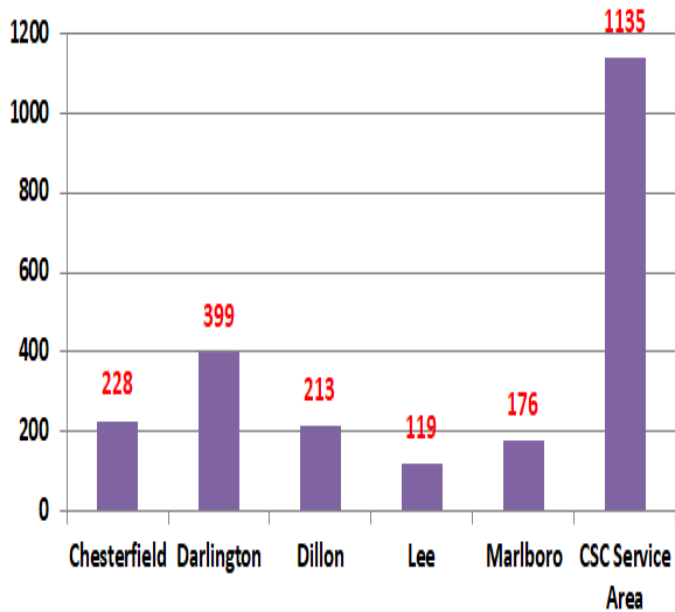
CSC Testing as % of Total Testing in Service Area



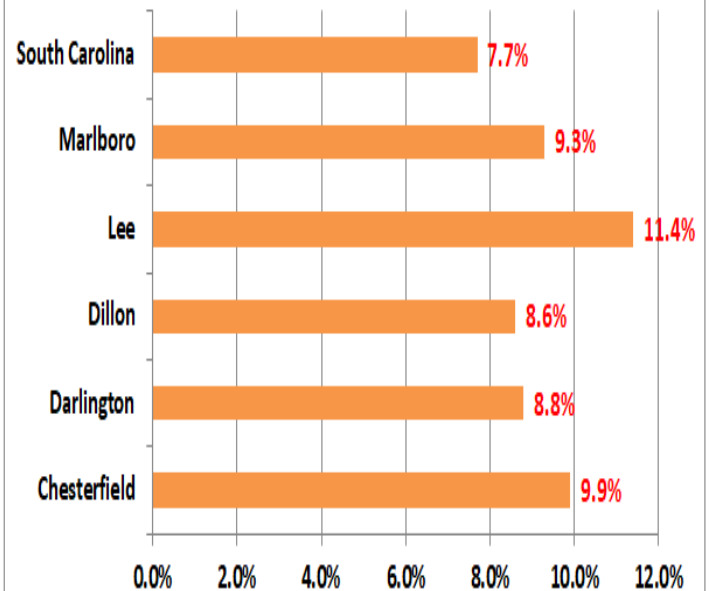
CSC Testing as % of Total SC Testing



Total Hospitalizations



Rate of Hospitalization

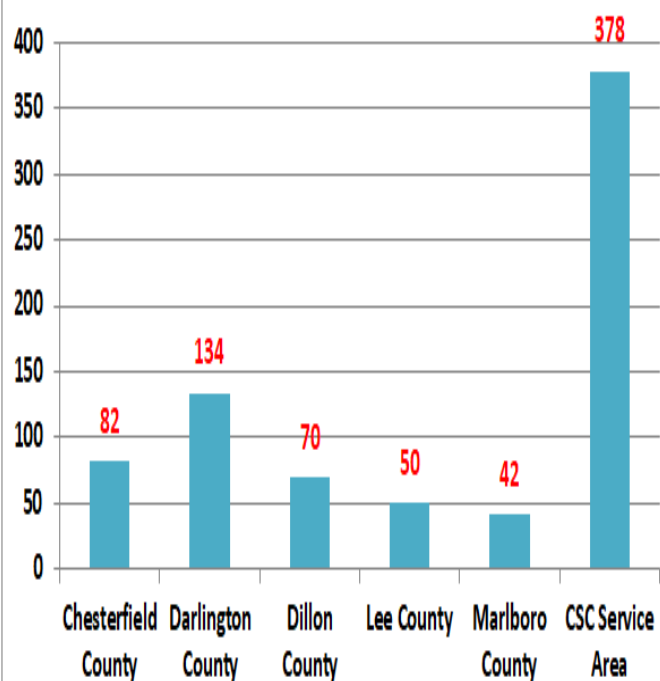


Hospital Utilization

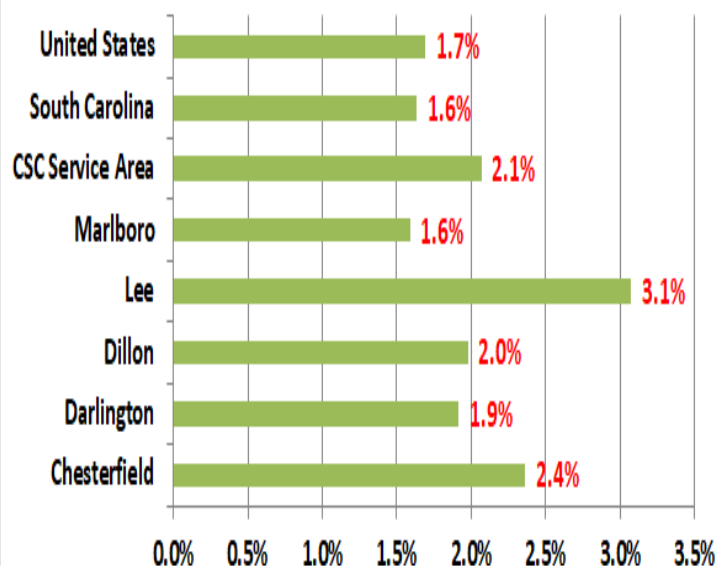
County	Beds Occupied	Beds Available	Covid Patients	ICU Beds Occupied	ICU Beds Available	ICU Covid Pts.	Patients Ventilated	Ventilators Available	Covid Pts. Vent.	Percent Occupied
Chesterfield	30	18	7	4	2	1	3	1	1	62.5%
Clarendon	30	19	17	6	0	5	0	5	0	61.2%
Darlington	54	35	23	9	3	3	1	11	1	60.7%
Dillon	40	0	14	6	0	3	3	5	0	100.0%
Florence	655	68	171	111	32	37	51	86	26	90.6%
Georgetown	173	10	61	27	3	16	11	37	9	94.5%
Horry	650	51	173	87	9	40	44	91	22	92.7%
Marion	36	1	15	6	2	5	4	10	4	97.3%
Sumter	150	57	53	13	4	7	4	11	3	72.5%
Williamsburg	14	7	6	4	0	2	2	1	2	66.7%
Total	1832	266	540	273	55	119	123	258	68	87.3%

Note: Data and percentages as reported by DHEC.

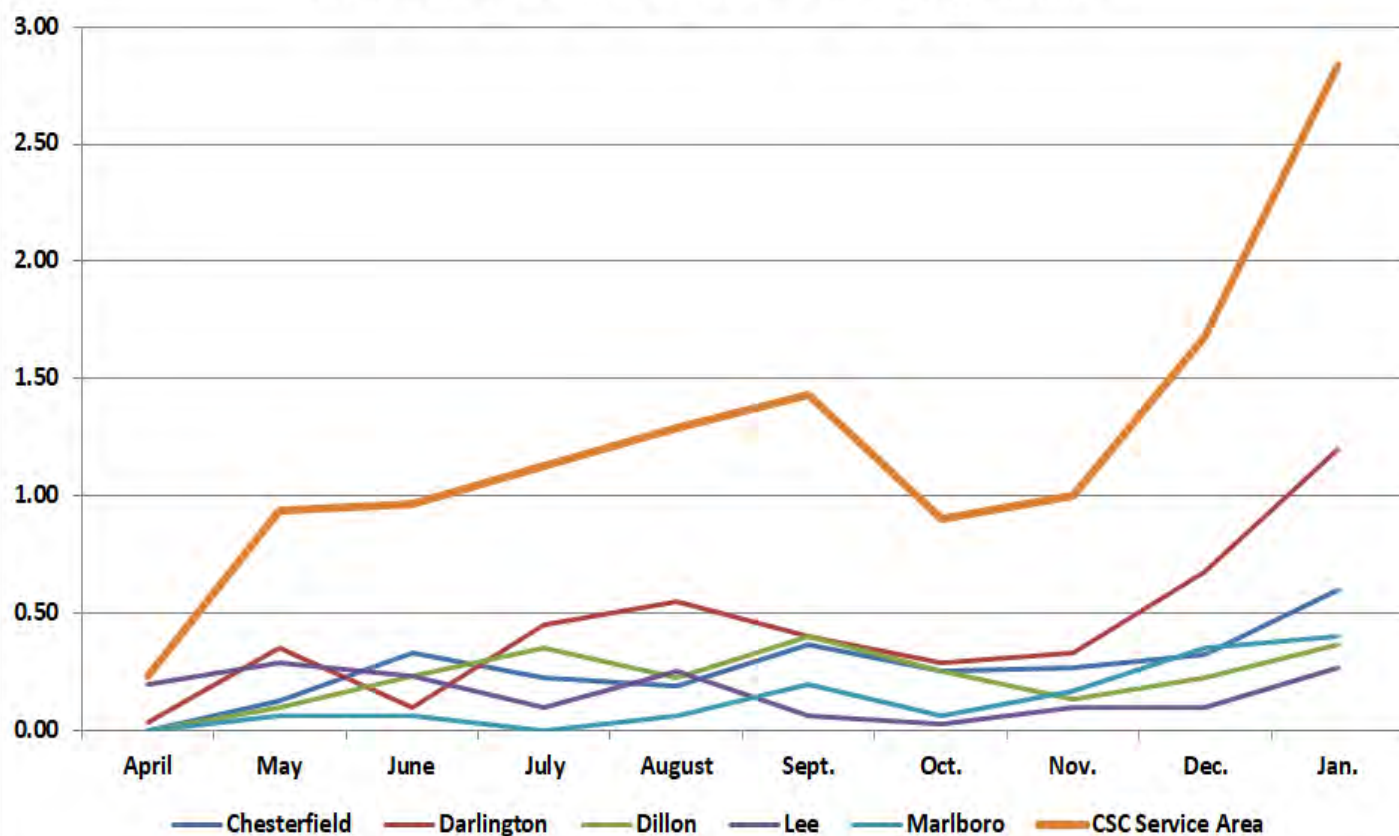
Covid-19 Deaths



Percent of Covid-19 Cases Resulting in Death



Rate of Covid-19 Deaths Per Day by Month



Rankings/

Risk Factors

Harvard Global Health Institute Risk Levels

County	Risk Level	SC Rank*	US Rank**
Darlington County	Red	1	54
Lee County	Red	11	133
Dillon County	Red	12	138
Chesterfield County	Red	16	162
Marlboro County	Red	18	188
* out of 46 counties ** out of 3142 counties or equivalents			

Covid Act Now Risk Levels

County	Risk Level
Chesterfield County	Severe
Darlington County	Severe
Dillon County	Severe
Lee County	Active/Imminent
Marlboro County	Severe

CDC County Alert Zones

County	Risk Zone
Chesterfield County	Red
Darlington County	Red
Dillon County	Red
Lee County	Red
Marlboro County	Red

Cumulative Rate State Rank

County	Rank*
Dillon County	2
Lee County	10
Marlboro County	16
Darlington County	17
Chesterfield County	45
* out of 46 counties	

Pandemic Vulnerability Index*

County	Rank*
Dillon County	21
Lee County	70
Chesterfield County	80
Darlington County	90
Marlboro County	233
* out of 3142 counties or equivalents	

National Social Distancing Scoreboard

Location	Grade
Chesterfield County	B
Darlington County	D-
Dillon County	B
Lee County	D+
Marlboro County	A
South Carolina	F
United States	D+

* Pandemic Vulnerability Index is calculated by the NIH. It includes 12 factors including demographics, co-morbidities, health disparities, testing, current cases, etc.

CDC Information:



COVID-19

SOUTH CAROLINA

STATE PROFILE REPORT | 01.24.2021

	STATE	STATE, % CHANGE FROM PREVIOUS WEEK	FEMA/HHS REGION	UNITED STATES		
NEW COVID-19 CASES (RATE PER 100,000)	33,221 (645)	+4%	284,894 (426)	1,263,643 (381)		
VIRAL (RT-PCR) LAB TEST POSITIVITY RATE	14.1%	-3.4%*	13.1%	10.6%		
TOTAL VIRAL (RT-PCR) LAB TESTS (TESTS PER 100,000)	118,122** (2,294**)	-15%**	1,773,266** (2,650**)	10,265,933** (3,092**)		
COVID-19 DEATHS (RATE PER 100,000)	367 (7.1)	+7%	4,501 (6.7)	21,658 (6.5)		
SNFs WITH ≥1 NEW RESIDENT COVID-19 CASE	47%†	+7%*	34%	26%		
SNFs WITH ≥1 NEW STAFF COVID-19 CASE	61%†	-9%*	54%	43%		
SNFs WITH ≥1 NEW RESIDENT COVID-19 DEATH	18%†	+1%*	16%	15%		
TOTAL NEW COVID-19 HOSPITAL ADMISSIONS (RATE PER 100 BEDS)	2,770 (27)	-10% (-11%)	32,686 (21)	145,543 (20)		
NUMBER OF HOSPITALS WITH SUPPLY SHORTAGES (PERCENT)	21 (31%)	+5%	162 (17%)	1,052 (21%)		
NUMBER OF HOSPITALS WITH STAFF SHORTAGES (PERCENT)	25 (37%)	-4%	162 (17%)	945 (18%)		
COVID-19 VACCINE SUMMARY	DOSES DISTRIBUTED		1ST DOSE ADMINISTERED	FULL COURSE ADMINISTERED		
	TOTAL	RATE PER 100,000	TOTAL	PERCENT OF POPULATION	TOTAL	PERCENT OF POPULATION
	453,250	8,803	233,257	4.5%	43,810	0.9%

* Indicates absolute change in percentage points.

** Due to delayed reporting, this figure may underestimate total diagnostic tests and week-on-week changes in diagnostic tests.

† 92% of facilities reported during the most current week.

DATA SOURCES and METHODS

Note: Some dates may have incomplete data due to delays in reporting. Data may be backfilled over time, resulting in week-to-week changes.

Cases and Deaths: State values are aggregated data provided by the states to the CDC. Data is through 1/22/2021; previous week is 1/9 - 1/15.

Testing: CELR (COVID-19 Electronic Lab Reporting) state health department-reported data through 1/20/2021. Previous week is 1/7 - 1/13.

SNFs: Skilled nursing facilities. National Healthcare Safety Network. Data is through 1/17/2021; previous week is 1/4 - 1/10.

Admissions: Unified Hospitals Dataset in HHS Protect. Totals include confirmed and suspected COVID-19 admissions.

Shortages: Unified Hospitals Dataset in HHS Protect. Values presented show the latest reports from hospitals in the week ending 1/22/2021.

Vaccinations: [Vaccine Administration Data](#). Data includes both the Moderna and Pfizer BioNTech COVID-19 vaccines and reflects current data available as of 16:00 EST on 01/24/2021. Data last updated 06:00 EST on 01/24/2021.

METHODS - details available on last page of report.

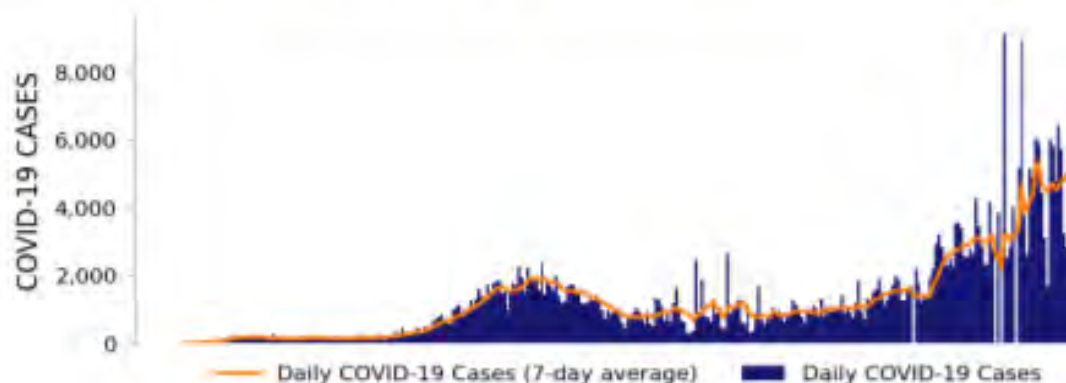


COVID-19

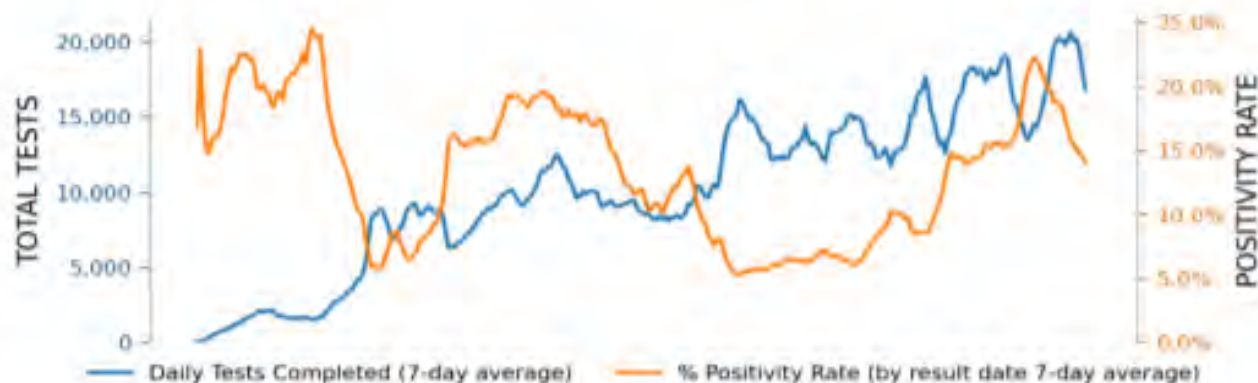
SOUTH CAROLINA

STATE PROFILE REPORT | 01.24.2021

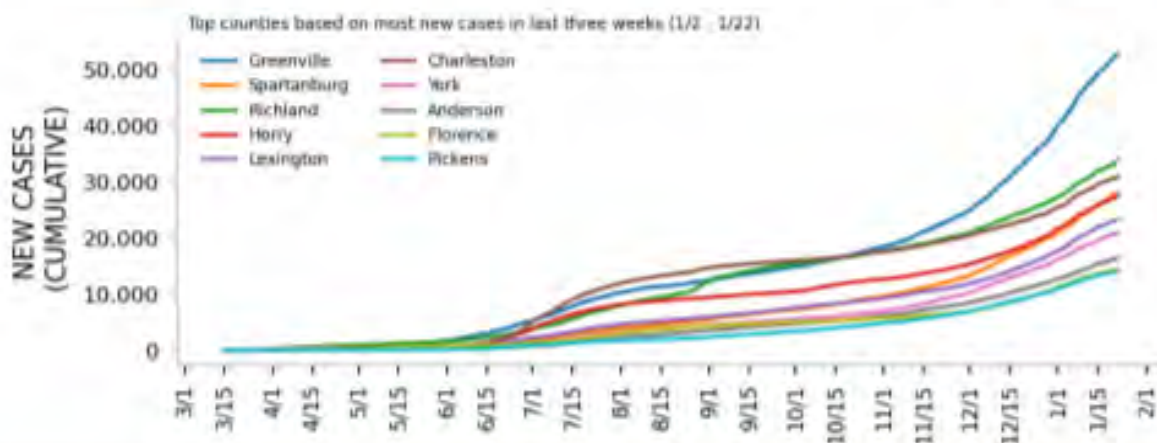
NEW CASES



TESTING



TOP COUNTIES



DATA SOURCES and METHODS

Note: Some dates may have incomplete data due to delays in reporting. Data may be backfilled over time, resulting in week-to-week changes.

Cases: County-level data is from a CDC managed aggregate county dataset compiled from state and local health departments; therefore, the values may not match those reported directly by the state. State values are aggregated data provided by the states to the CDC. Data is through 1/22/2021.

Testing: CELR (COVID-19 Electronic Lab Reporting) state health department-reported data through 1/20/2021.

METHODS - details available on last page of report

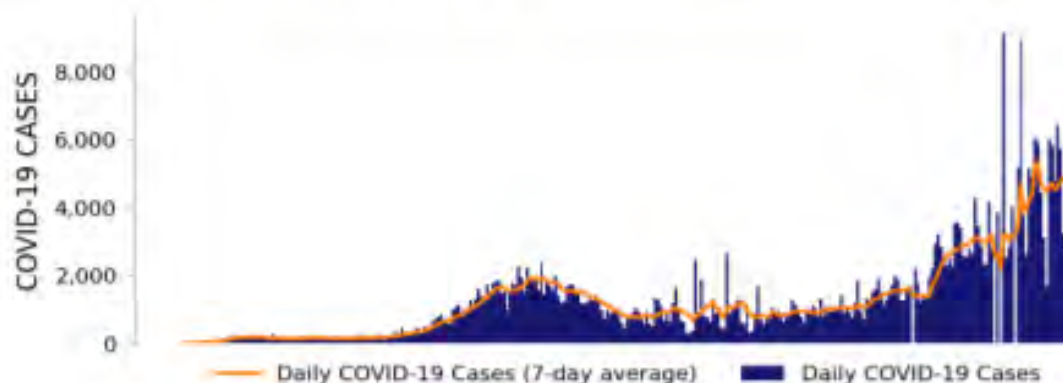


COVID-19

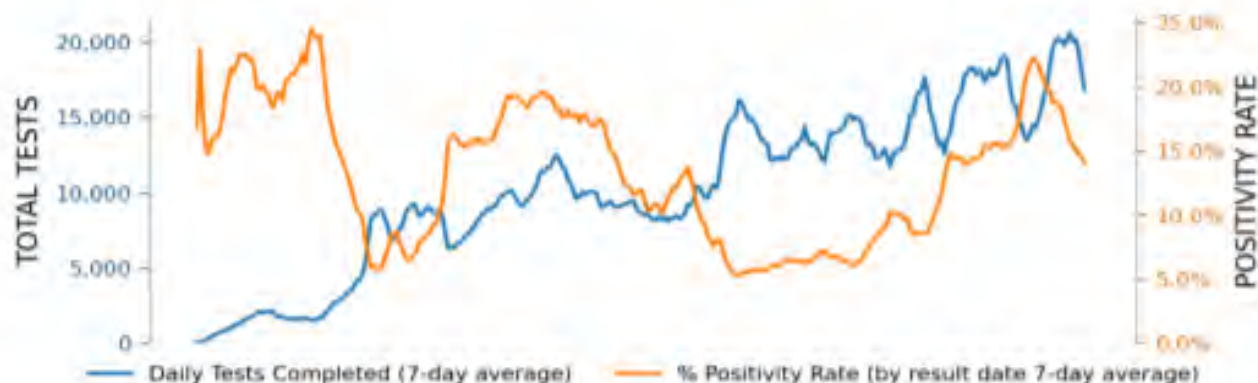
SOUTH CAROLINA

STATE PROFILE REPORT | 01.24.2021

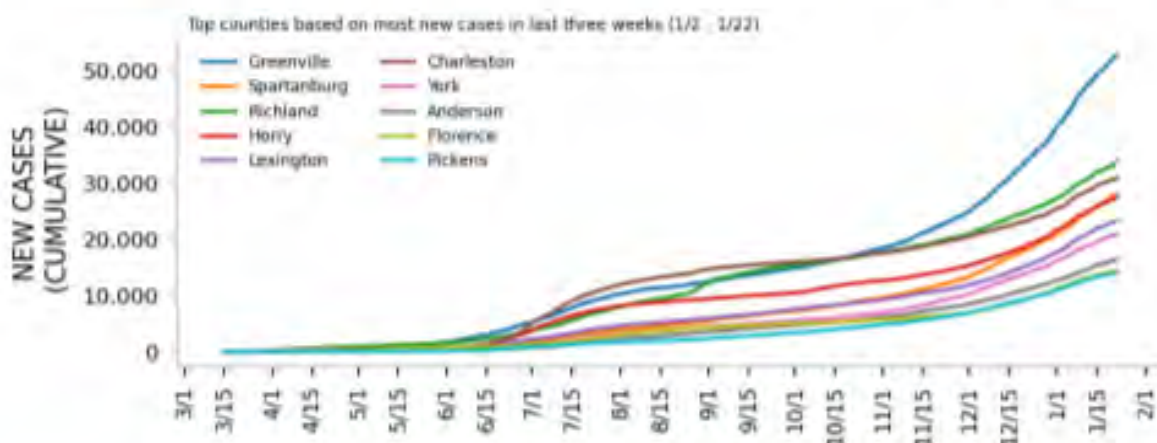
NEW CASES



TESTING



TOP COUNTIES



DATA SOURCES and METHODS

Note: Some dates may have incomplete data due to delays in reporting. Data may be backfilled over time, resulting in week-to-week changes.

Cases: County-level data is from a CDC managed aggregate county dataset compiled from state and local health departments; therefore, the values may not match those reported directly by the state. State values are aggregated data provided by the states to the CDC. Data is through 1/22/2021.

Testing: CELR (COVID-19 Electronic Lab Reporting) state health department-reported data through 1/20/2021.

METHODS - details available on last page of report



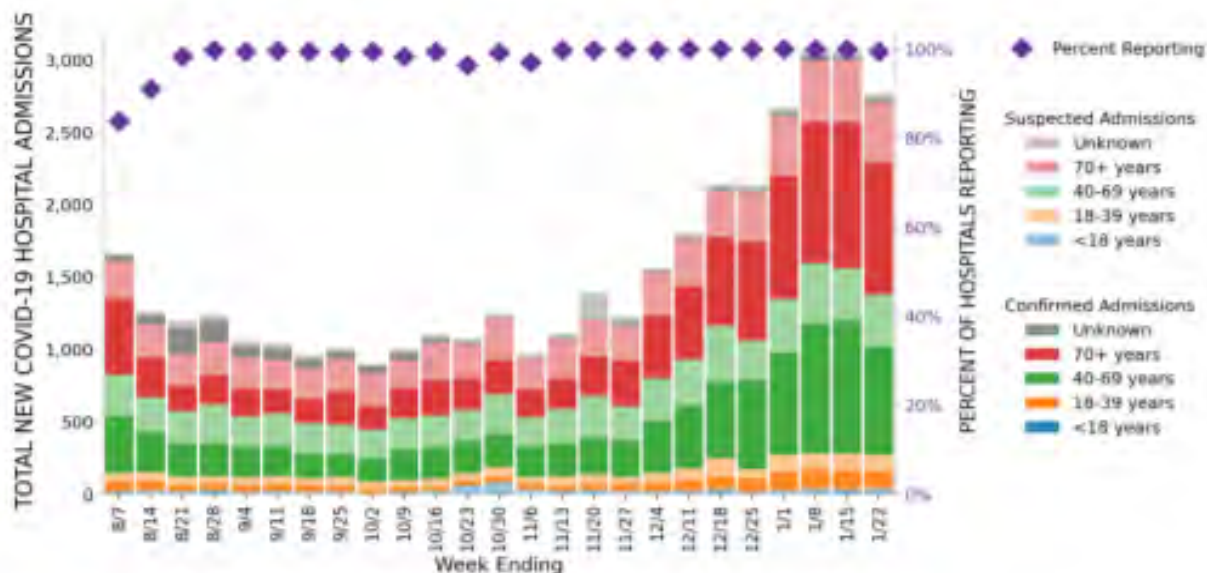
COVID-19

SOUTH CAROLINA

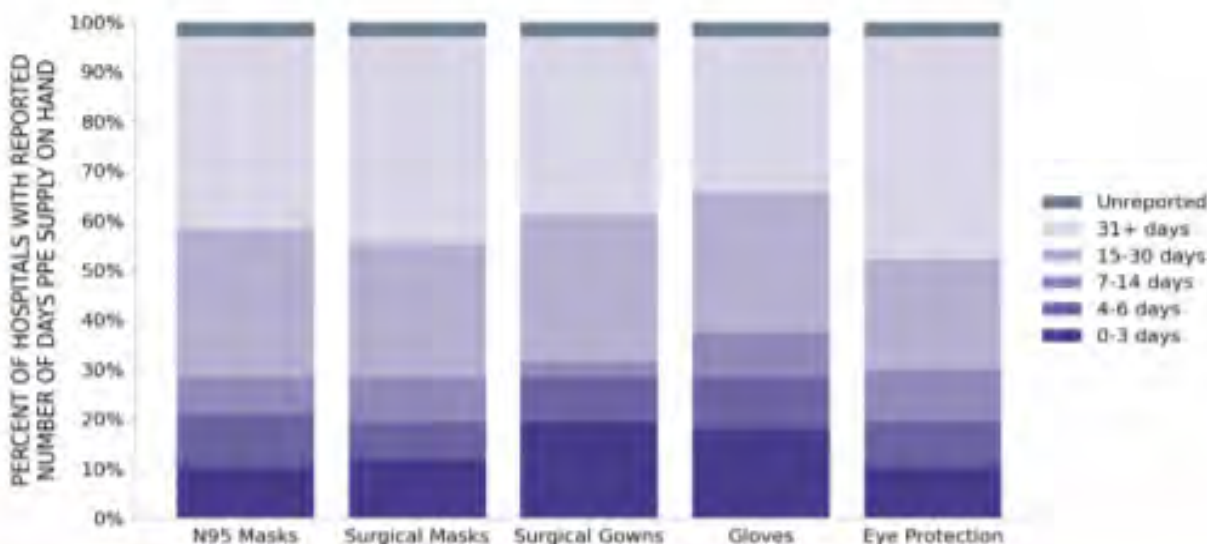
STATE PROFILE REPORT | 01.24.2021

67 hospitals are expected to report in South Carolina

HOSPITAL ADMISSIONS



HOSPITAL PPE SUPPLIES



DATA SOURCES and METHODS

Hospitalizations: Unified Hospitals Dataset in HHS Protect. These data exclude psychiatric, rehabilitation, and religious non-medical hospitals. Hospitals explicitly identified by states/regions as those from which we should not expect reports were excluded from the percent reporting figure.

PPE: Unified Hospitals Dataset in HHS Protect. These data exclude psychiatric, rehabilitation, and religious non-medical hospitals. Values presented show the latest reports from hospitals in the week ending 1/20/2021.

METHODS - details available on last page of report.



COVID-19

SOUTH CAROLINA

STATE PROFILE REPORT | 01.24.2021

COVID-19 COUNTY AND METRO ALERTS*

Based on new cases and test positivity in the last week, top 12 shown in table (full lists below)

	METRO AREA (CBSA)	COUNTIES
LOCALITIES IN RED ZONE	16 ▼ (-2) Greenville-Anderson Charleston-North Charleston Charlotte-Concord-Gastonia Spartanburg Myrtle Beach-Conway-North Myrtle Beach Florence Hilton Head Island-Bluffton Augusta-Richmond County Sumter Orangeburg Seneca Greenwood	43 ▼ (-1) Greenville Spartanburg Horry Lexington York Anderson Florence Pickens Dorchester Beaufort Berkeley Aiken
LOCALITIES IN ORANGE ZONE	1 ▲ (+1) Columbia	2 ■ (+0) Richland Charleston
LOCALITIES IN YELLOW ZONE	1 ▲ (+1) Newberry	1 ▲ (+1) Newberry
Change from previous week's alerts: ▲ Increase ■ Stable ▼ Decrease		

All Red CBSAs: Greenville-Anderson, Charleston-North Charleston, Charlotte-Concord-Gastonia, Spartanburg, Myrtle Beach-Conway-North Myrtle Beach, Florence, Hilton Head Island-Bluffton, Augusta-Richmond County, Sumter, Orangeburg, Seneca, Greenwood, Georgetown, Gaffney, Bennettsville, Union

All Red Counties: Greenville, Spartanburg, Horry, Lexington, York, Anderson, Florence, Pickens, Dorchester, Beaufort, Berkeley, Aiken, Sumter, Lancaster, Orangeburg, Oconee, Darlington, Greenwood, Laurens, Kershaw, Georgetown, Cherokee, Dillon, Williamsburg, Chesterfield, Marion, Chester, Colleton, Clarendon, Marlboro, Union, Edgefield, Barnwell, Abbeville, Fairfield, Jasper, Lee, Hampton, Saluda, Calhoun, Bamberg, McCormick, Allendale

* Localities with fewer than 10 cases last week have been excluded from these alerts.

Notes: Lists of red, orange, and yellow localities are sorted by the number of new cases in the last 3 weeks, from highest to lowest. Some dates may have incomplete data due to delays in reporting. Data may be backfilled over time, resulting in week-to-week changes.

DATA SOURCES and METHODS

Cases and Deaths: CBSA and county values are calculated by aggregating county-level data from a CDC-managed dataset compiled from state and local health departments; therefore, the values may not match those reported directly by the state. Data is through 1/22/2021.

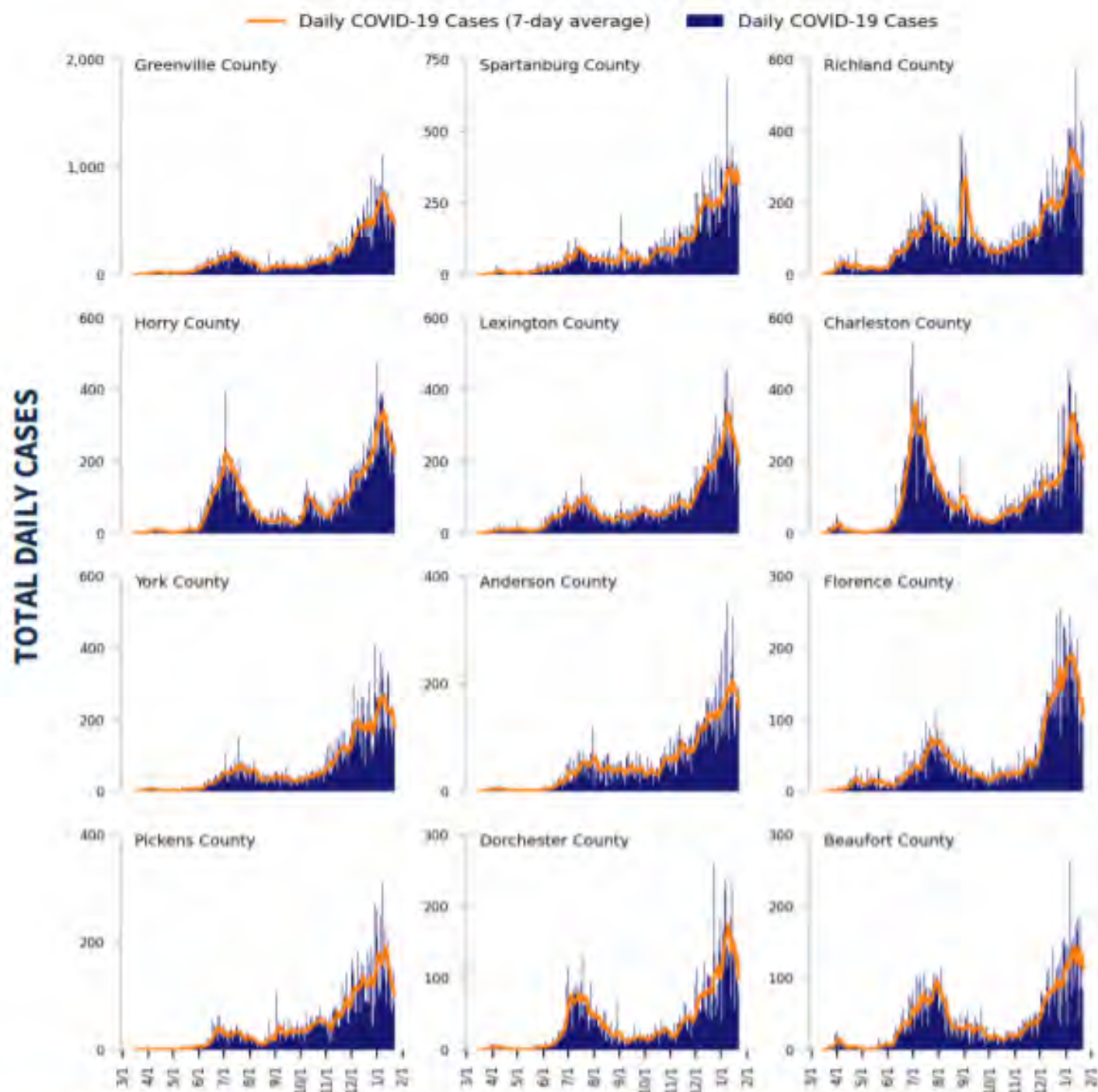
Testing: CELR (COVID-19 Electronic Lab Reporting) state health department-reported data through 1/20/2021.

METHODS – details available on last page of report



COVID-19

Top 12 counties based on number of new cases in the last 3 weeks



DATA SOURCES and METHODS

Cases: County-level data is from a CDC managed aggregate county dataset compiled from state and local health departments; therefore, the values may not match those reported directly by the state. Data is through 1/22/2021. Last 3 weeks is 1/2 - 1/22. Counties are listed in order of the number of cases in the last three weeks, from largest to smallest.

METHODS: details available on last page of report

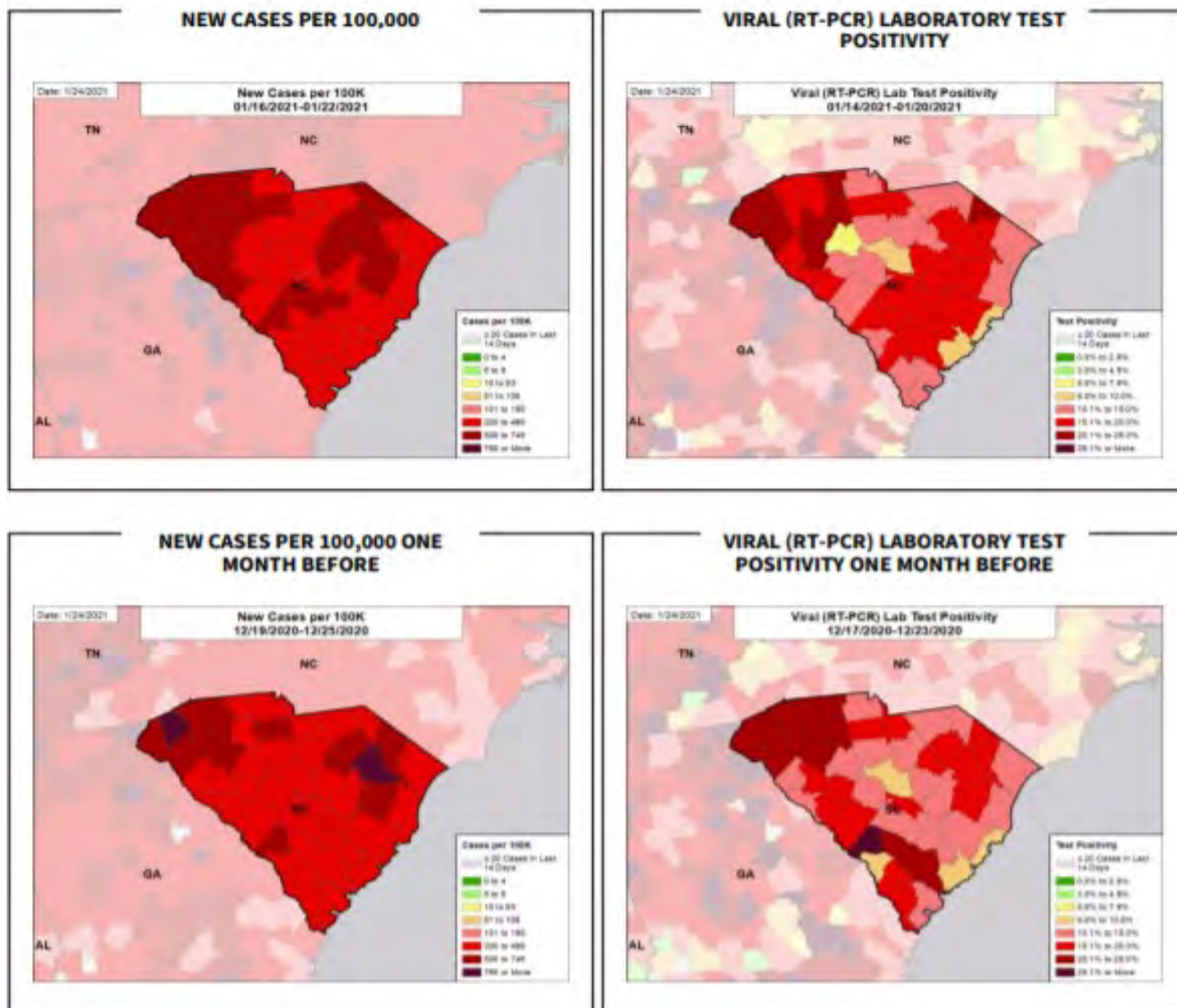


COVID-19

SOUTH CAROLINA

STATE PROFILE REPORT | 01.24.2021

CASE RATES AND VIRAL LAB TEST POSITIVITY



DATA SOURCES and METHODS

Note: Some dates may have incomplete data due to delays in reporting. Data may be backfilled over time, resulting in week-to-week changes.

Cases: County-level data is from a CDC managed aggregate county dataset compiled from state and local health departments; therefore, the values may not match those reported directly by the state. Data is through 1/22/2021. The week one month before is 12/19 - 12/25.

Testing: CELR (COVID-19 Electronic Lab Reporting) state health department-reported data through 1/20/2021. The week one month before is 12/17 - 12/23.

METHODS – details available on last page of report



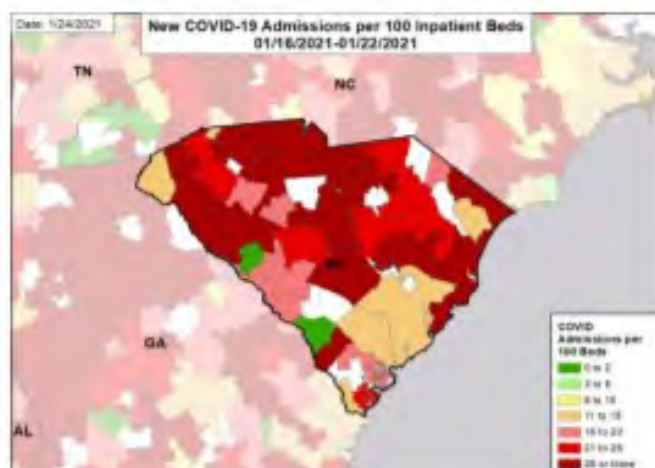
COVID-19

SOUTH CAROLINA

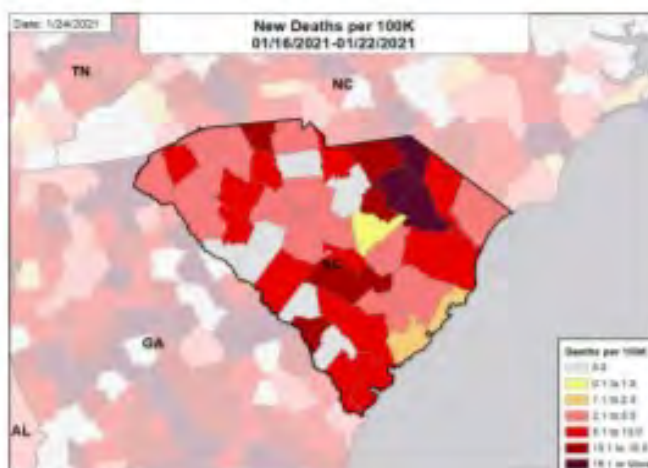
STATE PROFILE REPORT | 01.24.2021

HOSPITAL ADMISSIONS AND DEATH RATES

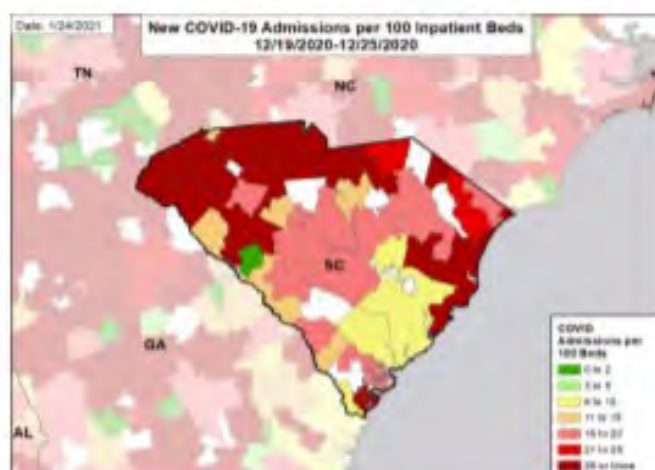
**TOTAL NEW COVID-19 ADMISSIONS
PER 100 INPATIENT BEDS**



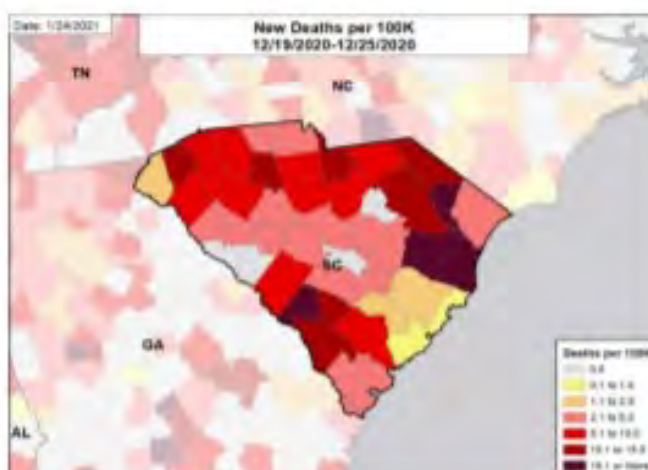
NEW DEATHS PER 100,000



**TOTAL NEW COVID-19 ADMISSIONS PER 100
INPATIENT BEDS ONE MONTH BEFORE**



**NEW DEATHS PER 100,000 ONE
MONTH BEFORE**



DATA SOURCES and METHODS

Note: Some dates may have incomplete data due to delays in reporting. Data may be backfilled over time, resulting in week-to-week changes.

Deaths: County-level data is from a CDC managed aggregate county dataset compiled from state and local health departments; therefore, the values may not match those reported directly by the state. Data is through 1/22/2021. The week one month before is 12/19 - 12/25.

Hospitalizations: Unified Hospitals Dataset in HHS Protect. Totals include confirmed and suspected COVID-19 admissions.

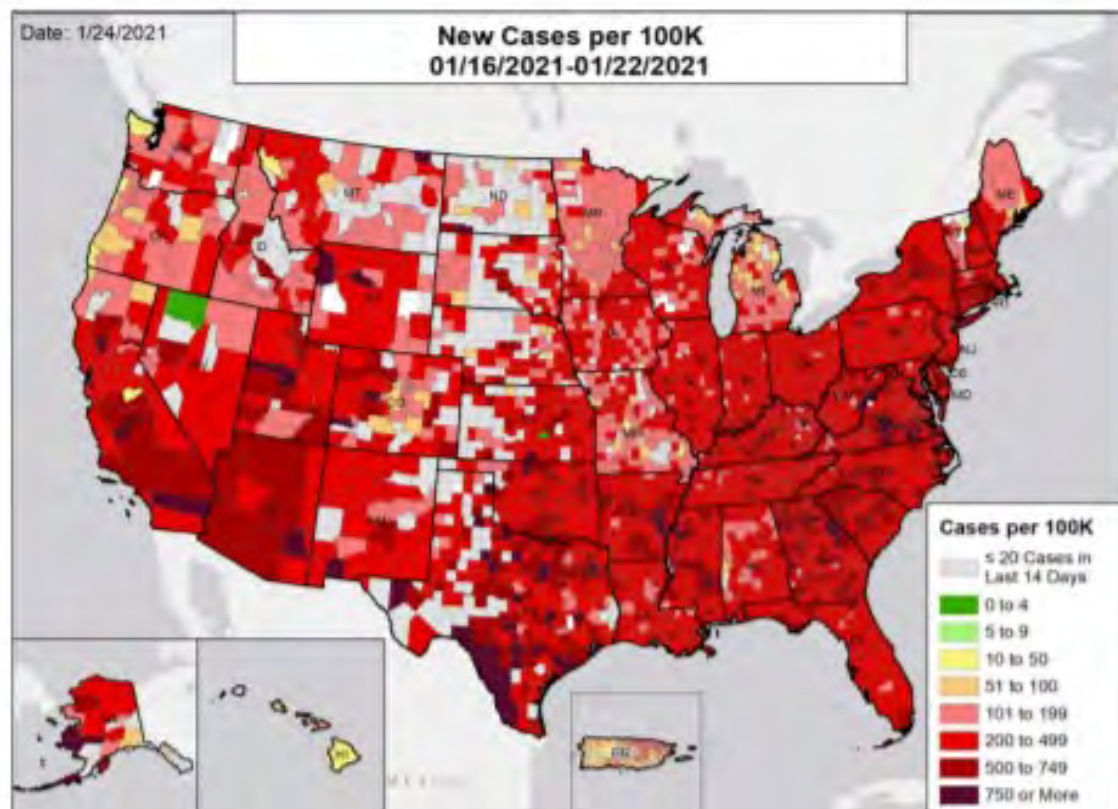
METHODS: details available on last page of report



COVID-19

National Picture

NEW CASES PER 100,000



NATIONAL
RANKING OF
NEW CASES
PER 100,000

National
Rank State

1	AZ
2	SC
3	CA
4	RI
5	NY
6	GA
7	TX
8	DE
9	VA
10	OK
11	AR
12	KY
13	NC
14	MA
15	MS
16	UT
17	CT
18	NH
19	WV
20	NJ
21	AL
22	TN
23	FL
24	KS
25	OH
26	LA
27	IN
28	MT
29	PA
30	ID
31	WY
32	NM
33	NE
34	IL
35	MD
36	DC
37	IA
38	WI
39	ME
40	MT
41	SD
42	CO
43	AK
44	VT
45	WA
46	MN
47	MI
48	MO
49	OR
50	ND
51	PR
52	HI

COVID-19 VACCINE SUMMARY

TOTAL DOSES DISTRIBUTED (RATE PER 100,000)	TOTAL 1ST DOSE ADMINISTERED (PERCENT OF POPULATION)	TOTAL FULL COURSE ADMINISTERED (PERCENT OF POPULATION)
41,411,550 (12,473)	18,502,131 (7.2%)	3,216,836 (1.0%)

DATA SOURCES and METHODS

Note: Some dates may have incomplete data due to delays in reporting. Data may be backfilled over time, resulting in week-to-week changes.

Cases: County-level data is from a CDC managed aggregate county dataset compiled from state and local health departments; therefore, the values may not match those reported directly by the state. State values are aggregated data provided by the states to the CDC. Data is through 1/22/2021.

Vaccinations: [CDC COVID Data Tool](https://www.cdc.gov/data/). Data includes both the Moderna and Pfizer BioNTech COVID-19 vaccines and reflects current data available as of 16:00 EST on 01/24/2021. Data last updated 06:00 EST on 01/24/2021.

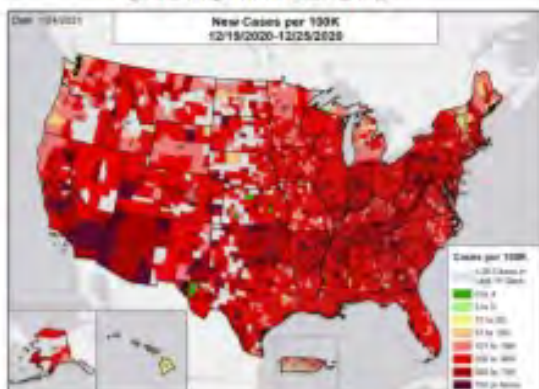
METHODS – details available on last page of report



National Picture

NEW CASES PER 100,000 IN THE WEEK:

ONE MONTH BEFORE

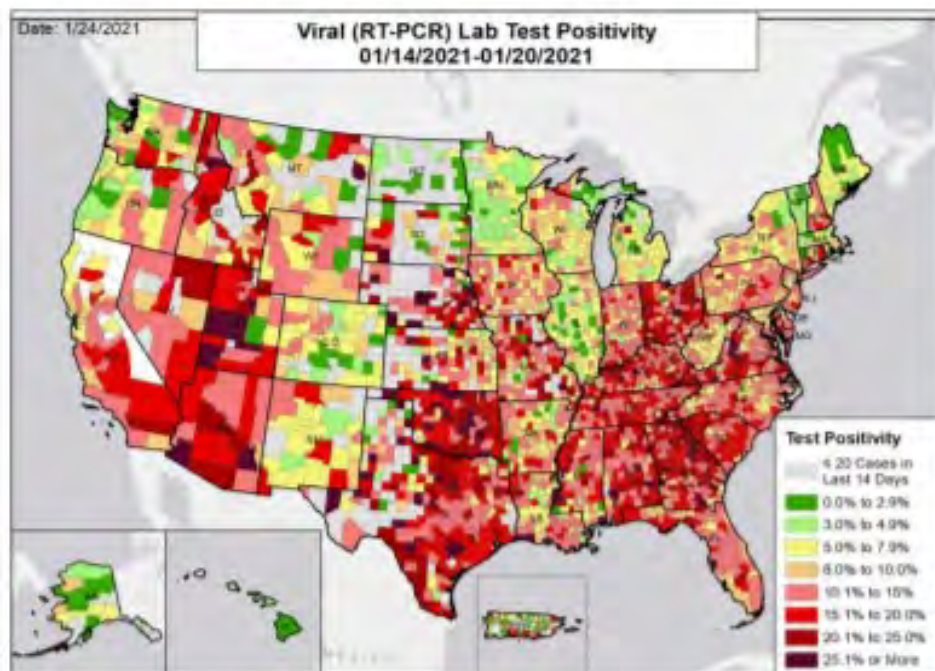




COVID-19

National Picture

VIRAL (RT-PCR) LAB TEST POSITIVITY



NATIONAL RANKING OF TEST POSITIVITY

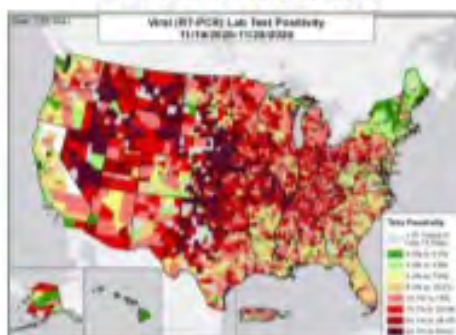
National Rank	State	National Rank	State
1	OK	27	KS
2	AZ	28	WV
3	NV	29	MD
4	UT	30	NY
5	TX	31	PR
6	KY	32	DE
7	GA	33	MT
8	NE	34	NM
9	AL	35	WA
10	SC	36	WI
11	TN	37	WY
12	MS	38	IL
13	ID	39	OR
14	VA	40	MI
15	CA	41	MA
16	FL	42	CO
17	NH	43	ME
18	MO	44	RI
19	NC	45	MN
20	IN	46	DC
21	NJ	47	VT
22	IA	48	AK
23	LA	49	HI
24	PA	50	ND
25	OH	—	CT
26	AR	—	SD

VIRAL (RT-PCR) LAB TEST POSITIVITY IN THE WEEK:

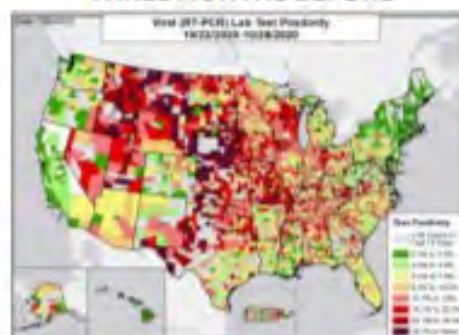
ONE MONTH BEFORE



TWO MONTHS BEFORE



THREE MONTHS BEFORE



DATA SOURCES and METHODS

Note: Some dates may have incomplete data due to delays in reporting. Data may be backfilled over time, resulting in week-to-week changes.

Testing: Combination of CELR (COVID-19 Electronic Lab Reporting) state health department-reported data and HHS Protect laboratory data (provided directly to Federal Government from public health labs, hospital labs, and commercial labs) through 1/20/2021. The week one month before is 12/17 - 12/23; the week two months before is 11/19 - 11/25; the week three months before is 10/22 - 10/28.

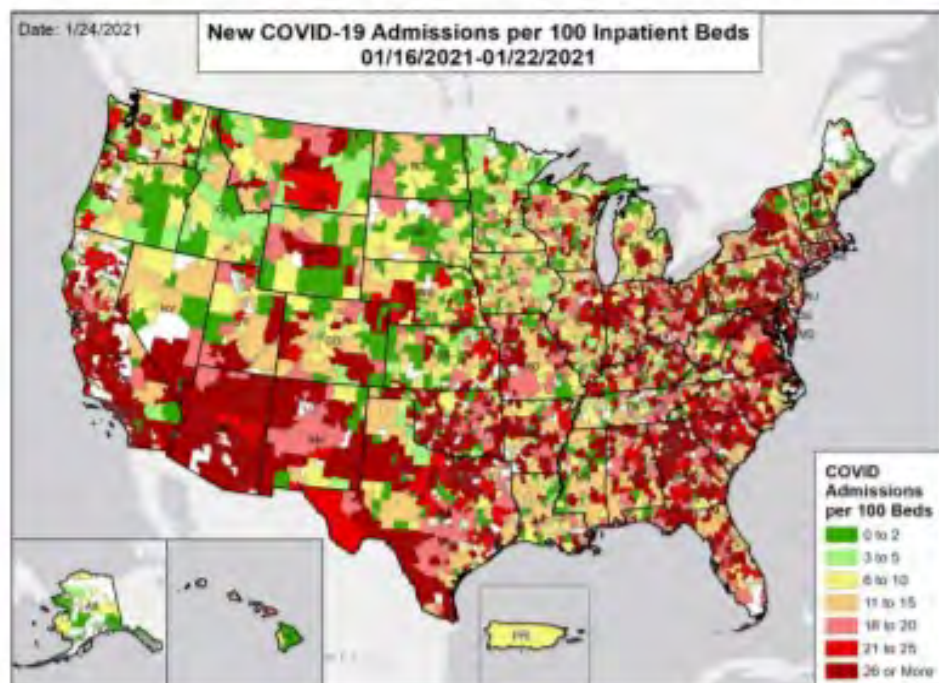
METHODS – details available on last page of report



COVID-19

National Picture

TOTAL NEW COVID-19 ADMISSIONS PER 100 INPATIENT BEDS



NATIONAL RANKING OF ADMISSIONS PER 100 BEDS

National Rank	State	National Rank	State
1	AZ	27	WV
2	MD	28	KS
3	AR	29	WY
4	GA	30	MT
5	KY	31	WI
6	NM	32	TN
7	DC	33	CO
8	SC	34	MS
9	OK	35	NH
10	CA	36	UT
11	VA	37	NE
12	NY	38	OR
13	TX	39	LA
14	PA	40	MI
15	AL	41	WA
16	DE	42	RI
17	OH	43	VT
18	NC	44	ME
19	NJ	45	IA
20	MO	46	MN
21	CT	47	ND
22	IN	48	SD
23	IL	49	HI
24	FL	50	ID
25	NY	51	PR
26	MA	52	AK

TOTAL NEW COVID-19 ADMISSIONS PER 100 INPATIENT BEDS IN THE WEEK:

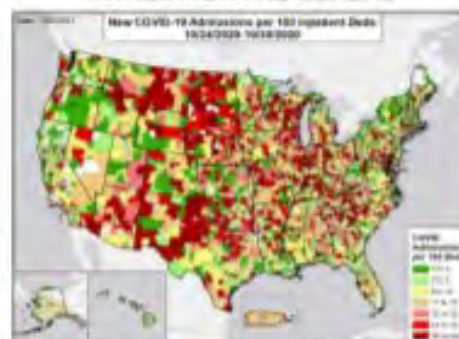
ONE MONTH BEFORE



TWO MONTHS BEFORE



THREE MONTHS BEFORE



DATA SOURCES and METHODS

Note: Some dates may have incomplete data due to delays in reporting. Data may be backfilled over time, resulting in week-to-week changes.

Admissions: Unified Hospitals Dataset in HHS Protect through 1/22/2021. Totals include confirmed and suspected COVID-19 admissions. The week one month before is 12/19 - 12/25; the week two months before is 11/21 - 11/27; the week three months before is 10/24 - 10/30.

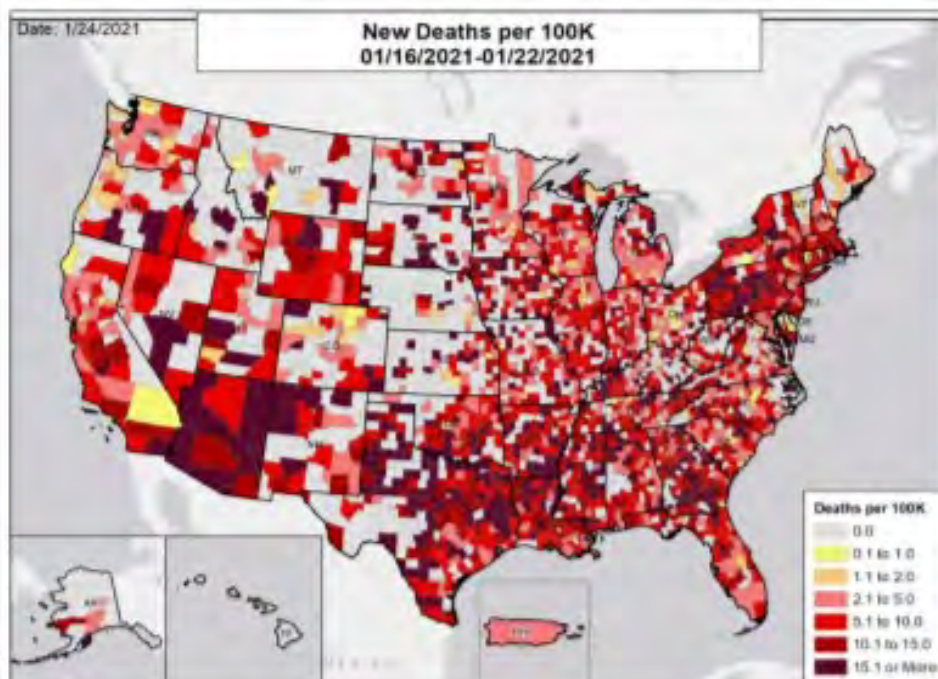
METHODS – details available on last page of report



COVID-19

National Picture

NEW DEATHS PER 100,000

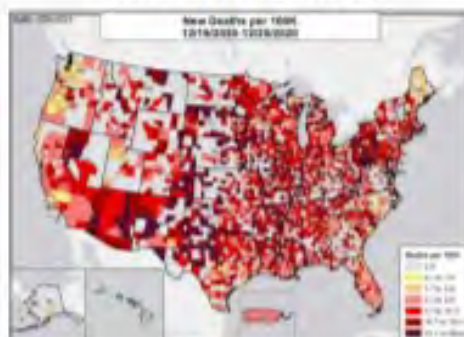


NATIONAL RANKING OF NEW DEATHS PER 100,000

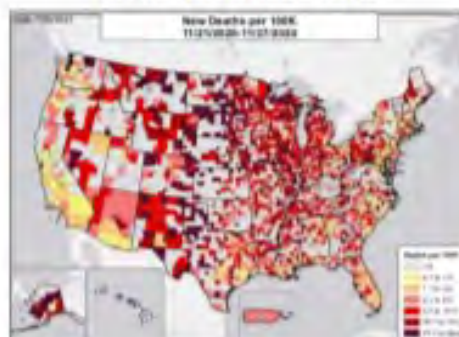
National Rank	State	National Rank	State
1	AZ	27	FL
2	PA	28	IL
3	NM	29	NC
4	AR	30	MD
5	AL	31	OH
6	MS	32	NH
7	CA	33	MO
8	GA	34	VA
9	LA	35	ID
10	WY	36	MI
11	WV	37	ND
12	TX	38	DC
13	RI	39	KS
14	SC	40	AK
15	OK	41	MN
16	IA	42	UT
17	NY	43	WA
18	WV	44	ME
19	MA	45	DE
20	TN	46	OR
21	CT	47	PR
22	WI	48	NE
23	NJ	49	CO
24	SD	50	MT
25	KY	51	HI
26	IN	52	VT

NEW DEATHS PER 100,000 IN THE WEEK:

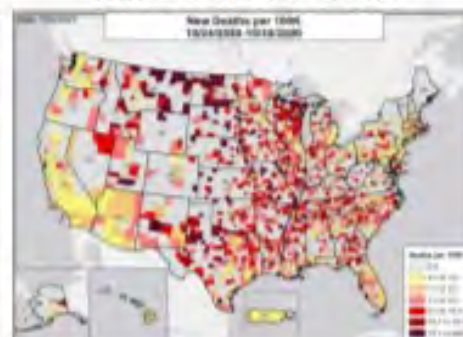
ONE MONTH BEFORE



TWO MONTHS BEFORE



THREE MONTHS BEFORE



DATA SOURCES and METHODS

Note: Some dates may have incomplete data due to delays in reporting. Data may be backfilled over time, resulting in week-to-week changes.

Deaths: County-level data is from a CDC managed aggregate county dataset compiled from state and local health departments; therefore, the values may not match those reported directly by the state. State values are aggregated data provided by the states to the CDC. The week one month before is 12/19 - 12/25; the week two months before is 11/21 - 11/27; the week three months before is 10/24 - 10/30.

METHODS - details available on last page of report.



METHODS

STATE PROFILE REPORT | 01.24.2021

Metric	Dark Green	Light Green	Yellow	Orange	Light Red	Red	Dark Red	Darkest Red
New cases per 100,000 population per week	≤4	5 - 9	10 - 50	51 - 100	101 - 199	200 - 499	500 - 749	≥750
Percent change in new cases per 100,000 population	≤-25%	-25% - -11%	-10% - 0%	1% - 10%	11% - 99%	100% - 999%	≥1000%	
Diagnostic test result positivity rate	≤2.5%	3.0% - 4.9%	5.0% - 7.9%	8.0% - 10.0%	10.1% - 15.0%	15.1% - 20.0%	20.1% - 25.0%	≥25.1%
Change in test positivity	≤-2.1%	-2.0% - -0.6%	-0.5% - 0.0%	0.1% - 0.5%	0.6% - 2.0%		≥2.1%	
Total diagnostic tests resulted per 100,000 population per week	≥5000	3001 - 4999	2000 - 2999	1000 - 1999	500 - 999		≤499	
Percent change in tests per 100,000 population	≥26%	11% - 25%	1% - 10%	-10% - 0%	-25% - -11%		≤-26%	
COVID-19 deaths per 100,000 population per week	0.0		0.1 - 1.0	1.1 - 2.0	2.1 - 5.0	5.1 - 10.0	10.1 - 15.0	≥15.1
Percent change in deaths per 100,000 population	≤-26%	-25% - -11%	-10% - 0%	1% - 10%	11% - 25%		≥26%	
Skilled Nursing Facilities with at least one resident COVID-19 case, death	0%		1% - 5%		≥6%			
Change in SNFs with at least one resident COVID-19 case, death	≤-2%		-1% - 1%		≥2%			
Total new COVID-19 hospital admissions per 100 beds	≤2	3 - 5	6 - 10	11 - 15	16 - 20	21 - 25	≥26	
Change in total new COVID-19 hospital admissions per 100 beds	≤-26%	-25% - -11%	-10% - 0%	1% - 10%	11% - 25%		≥26%	
Percent of hospitals with supply/staff shortages	≤0%		1% - 9%	10% - 19%	20% - 24%	25% - 29%	≥30%	
Change in percent of hospitals with supply/staff shortages	≤-10%	-9% - -5%	-4% - 0%	1% - 4%	5% - 9%		≥10%	

- Some dates may have incomplete data due to delays and/or differences in state reporting. Data may be backfilled over time, resulting in week-to-week changes. It is critical that states provide as up-to-date data as possible. Figures and values may also differ from state reports due to differing methodologies.
- Color threshold values are rounded before color classification.
- Cases and Deaths:** County-level data is from a CDC-managed aggregate county dataset compiled from state and local health departments; therefore, the values may not match those reported directly by the state. State values are aggregated data provided by the states to the CDC. Data is as of 16:00 EST on 01/24/2021.
- Testing:** The data presented represent viral COVID-19 laboratory diagnostic and screening test (reverse transcription polymerase chain reaction, RT-PCR) results—not individual people—and exclude antibody and antigen tests, unless stated otherwise. CELR (COVID-19 Electronic Lab Reporting) state health department-reported data are used to describe county-level viral COVID-19 RT-PCR result totals when information is available on patients' county of residence or healthcare providers' practice location. HHS Protect laboratory data (provided directly to Federal Government from public health labs, hospital labs, and commercial labs) are used otherwise. Because the data are deidentified, total RT-PCR tests are the number of tests performed, not the number of individuals tested. RT-PCR test positivity rate is the number of positive tests divided by the number of tests performed and resulted. Last week data are from 1/14 to 1/20; previous week data are from 1/7 to 1/13; the week one month before data are from 12/17 to 12/23. HHS Protect data is recent as of 16:02 EST on 01/24/2021. Testing data are inclusive of everything received and processed by the CELR system as of 19:00 EST on 01/23/2021.
- Hospitalizations:** Unified Hospitals Dataset in HHS Protect. These data exclude psychiatric, rehabilitation, and religious non-medical hospitals. In addition, hospitals explicitly identified by states/regions as those from which we should not expect reports were excluded from the percent reporting figure. The data presented represents raw data provided; we are working diligently with state liaisons to improve reporting consistency. Data is recent as of 16:08 EST on 01/24/2021.
- Hospital PPE:** Unified Hospitals Dataset in HHS Protect. This figure may differ from state data due to differences in hospital lists and reporting between federal and state systems. These data exclude psychiatric, rehabilitation, and religious non-medical hospitals. Hospitals explicitly identified by states/regions as those from which we should not expect reports were excluded from the percent reporting figure. Data is recent as of 12:49 EST on 01/24/2021.
- Skilled Nursing Facilities:** National Healthcare Safety Network (NHSN). Data report resident and staff cases independently. Quality checks are performed on data submitted to the NHSN. Data that fail these quality checks or appear inconsistent with surveillance protocols may be excluded from analyses. Data presented in this report are more recent than data publicly posted by CMS. Last week is 1/11-1/17, previous week is 1/4-1/10.
- County and Metro Area Color Categorizations**
 - Red Zone:** Those core-based statistical areas (CBSAs) and counties that during the last week reported both new cases at or above 101 per 100,000 population, and a lab test positivity result at or above 10.1%.
 - Orange Zone:** Those CBSAs and counties that during the last week reported both new cases between 51-100 per 100,000 population, and a lab test positivity result between 8.0-10.0%, or one of those two conditions and one condition qualifying as being in the "Red Zone."
 - Yellow Zone:** Those CBSAs and counties that during the last week reported both new cases between 10-50 per 100,000 population, and a lab test positivity result between 5.0-7.9%, or one of those two conditions and one condition qualifying as being in the "Orange Zone" or "Red Zone."
- Shortages:** Unified Hospitals Dataset in HHS Protect. These data exclude psychiatric, rehabilitation, and religious non-medical hospitals. Includes hospitals currently reporting a staffing shortage. Low supply is defined as a hospital reporting 0 or 1-3 days' supply, not able to obtain, or not able to maintain a 3-day supply of PPEs, face masks, gloves, gowns, or eye protection. Data is recent as of 12:49 EST on 01/24/2021.
- Vaccinations:** [CDC COVID Data Tracker](#). Data includes both the Moderna and Pfizer BioNTech COVID-19 vaccines and reflects current data available as of 16:00 EST on 01/24/2021. Data last updated 06:00 EST on 01/24/2021.

DHEC Information:

COVID-19 in South Carolina As of 11:59 PM on 1/30/2021

Number of Tests | All

4,997,535

Cases | All

445,916

Hospitalizations | All

18,113

Deaths | All

7,283

Go to Testing

Go to Cases

Go to Hospitalizations

Go to Deaths

Two Week Cumulative Incidence Rate

The Two-Week Cumulative Incidence Rate includes new (confirmed) cases reported in the past two weeks (January 17, 2021 - January 30, 2021) per 100,000 people. The rate describes recent incidence of COVID-19 infection to capture the potential burden of currently ill people who may be infectious and/or accessing healthcare.

Select a county to display county-specific information
Click the county again to return to the full state map



Low Incidence: 0-50

Moderate Incidence: 51-200

High Incidence: >200

State Recovery Estimate

88.4%

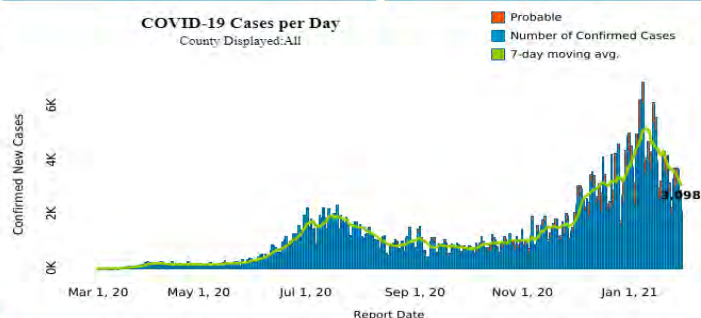
As of January 30, 2021, of the total positive cases of COVID-19 in South Carolina (445,916), we have symptom onset data (meaning, the date when a person first showed signs of illness) for 228,495 of those individuals. Of those individuals, 4,728 have unfortunately died. Our recovery rate data is based on symptom onset information, so the percentages below are based on the number of individuals we have symptom onset data for, NOT the total number of cases in the state.

As of January 30, 2021, 88.4% of those 223,767 individuals for which we have symptom onset data are estimated to have recovered from COVID-19, and 11.6% are estimated to remain ill.

Note: These data are provisional. The estimated percent of those who may have recovered from COVID-19 is based upon the following parameters:
1. Those who reported being hospitalized were deemed as "recovered" based upon having no reported adverse outcome reported as of >32 days since their illness onset.
2. Those who reported not being hospitalized were deemed as "recovered" based upon having no reported adverse outcome reported as of >14 days since their illness onset.
3. Those where hospitalization status was unknown were deemed as "recovered" based upon having no reported adverse outcome reported as of >32 days since their illness onset.

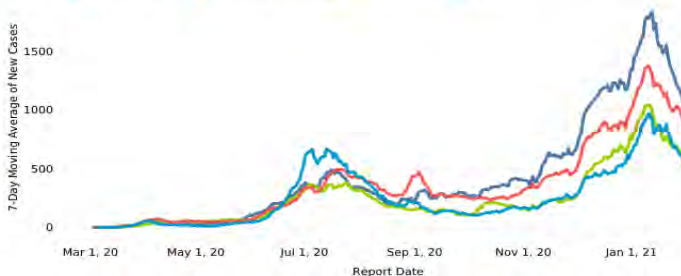
COVID-19 Cases per Day

County Displayed: All



7-Day Moving Average of COVID-19 Cases, by Public Health Region

Low Country: Midlands: Pee Dee: Upstate



COVID-19 in South Carolina As of 11:59 PM on 1/30/2021

Number of Tests | Chesterfield

37,915

Cases | Chesterfield

3,470

Hospitalizations | Chesterfield

228

Deaths | Chesterfield

82

Go to Testing

Go to Cases

Go to Hospitalizations

Go to Deaths

Two Week Cumulative Incidence Rate

The Two-Week Cumulative Incidence Rate includes new (confirmed) cases reported in the past two weeks (January 17, 2021 - January 30, 2021) per 100,000 people. The rate describes recent incidence of COVID-19 infection to capture the potential burden of currently ill people who may be infectious and/or accessing healthcare.

Select a county to display county-specific information
Click the county again to return to the full state map



Low Incidence: 0-50

Moderate Incidence: 51-200

High Incidence: >200

State Recovery Estimate

88.4%

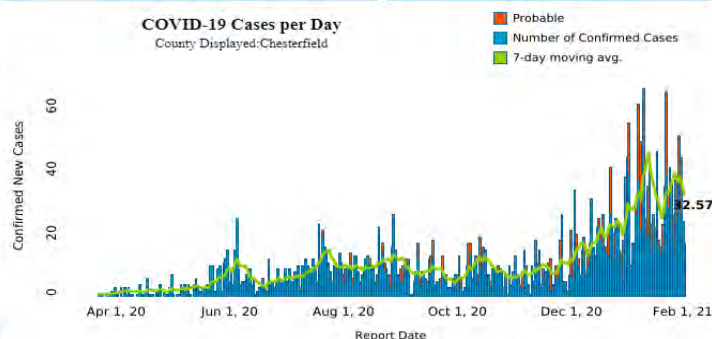
As of January 30, 2021, of the total positive cases of COVID-19 in South Carolina (445,916), we have symptom onset data (meaning, the date when a person first showed signs of illness) for 228,495 of those individuals. Of those individuals, 4,728 have unfortunately died. Our recovery rate data is based on symptom onset information, so the percentages below are based on the number of individuals we have symptom onset data for, NOT the total number of cases in the state.

As of January 30, 2021, 88.4% of those 223,767 individuals for which we have symptom onset data are estimated to have recovered from COVID-19, and 11.6% are estimated to remain ill.

Note: These data are provisional. The estimated percent of those who may have recovered from COVID-19 is based upon the following parameters:
1. Those who reported being hospitalized were deemed as "recovered" based upon having no reported adverse outcome reported as of >32 days since their illness onset.
2. Those who reported not being hospitalized were deemed as "recovered" based upon having no reported adverse outcome reported as of >14 days since their illness onset.
3. Those where hospitalization status was unknown were deemed as "recovered" based upon having no reported adverse outcome reported as of >32 days since their illness onset.

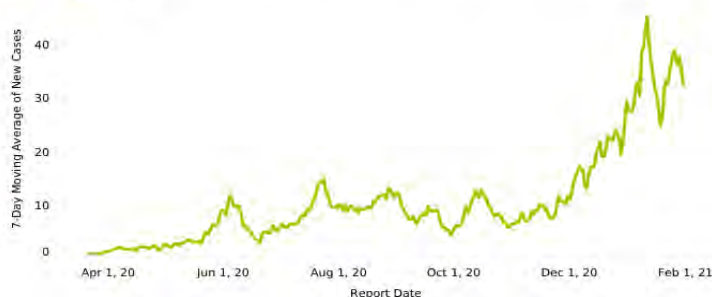
COVID-19 Cases per Day

County Displayed: Chesterfield



7-Day Moving Average of COVID-19 Cases, by Public Health Region

Pee Dee



COVID-19 in South Carolina

As of 11:59 PM on 1/30/2021

Number of Tests Darlington	Cases Darlington	Hospitalizations Darlington	Deaths Darlington
69,494	7,004	399	134
Go to Testing	Go to Cases	Go to Hospitalizations	Go to Deaths

Two Week Cumulative Incidence Rate

The Two-Week Cumulative Incidence Rate includes new (confirmed) cases reported in the past two weeks (January 17, 2021 - January 30, 2021) per 100,000 people. The rate describes recent incidence of COVID-19 infection to capture the potential burden of currently ill people who may be infectious and/or accessing healthcare.

Select a county to display county-specific information
Click the county again to return to the full state map



Low Incidence: 0-50 Moderate Incidence: 51-200 High Incidence: >200

State Recovery Estimate

88.4%

As of January 30, 2021, of the total positive cases of COVID-19 in South Carolina (445,916), we have symptom onset data (meaning, the date when a person first showed signs of illness) for 228,495 of those individuals. Of those individuals, 4,728 have unfortunately died. Our recovery rate data is based on symptom onset information, so the percentages below are based on the number of individuals we have symptom onset data for, NOT the total number of cases in the state.

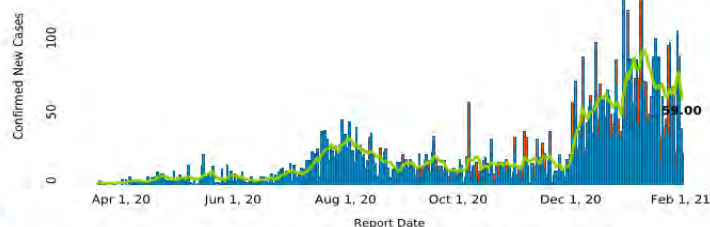
As of January 30, 2021, 88.4% of those 223,767 individuals for which we have symptom onset data are estimated to have recovered from COVID-19, and 11.6% are estimated to remain ill.

Note: These data are provisional. The estimated percent of those who may have recovered from COVID-19 is based upon the following parameters:
1. Those who reported being hospitalized were deemed as "recovered" based upon having no reported adverse outcome reported as of >32 days since their illness onset.
2. Those who reported not being hospitalized were deemed as "recovered" based upon having no reported adverse outcome reported as of >14 days since their illness onset.
3. Those where hospitalization status was unknown were deemed as "recovered" based upon having no reported adverse outcome reported as of >32 days since their illness onset.

COVID-19 Cases per Day

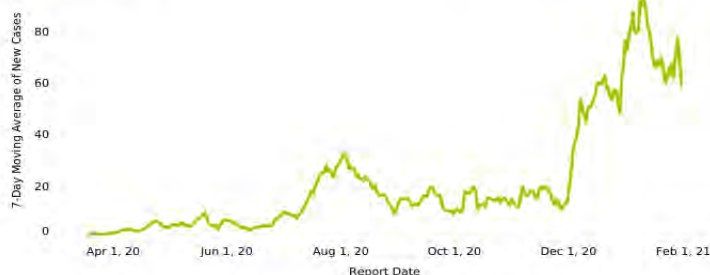
County Displayed: Darlington

Probable
Number of Confirmed Cases
7-day moving avg.



7-Day Moving Average of COVID-19 Cases, by Public Health Region

Pee Dee



COVID-19 in South Carolina

As of 11:59 PM on 1/30/2021

Number of Tests Dillon	Cases Dillon	Hospitalizations Dillon	Deaths Dillon
32,864	3,543	213	70
Go to Testing	Go to Cases	Go to Hospitalizations	Go to Deaths

Two Week Cumulative Incidence Rate

The Two-Week Cumulative Incidence Rate includes new (confirmed) cases reported in the past two weeks (January 17, 2021 - January 30, 2021) per 100,000 people. The rate describes recent incidence of COVID-19 infection to capture the potential burden of currently ill people who may be infectious and/or accessing healthcare.

Select a county to display county-specific information
Click the county again to return to the full state map



Low Incidence: 0-50 Moderate Incidence: 51-200 High Incidence: >200

State Recovery Estimate

88.4%

As of January 30, 2021, of the total positive cases of COVID-19 in South Carolina (445,916), we have symptom onset data (meaning, the date when a person first showed signs of illness) for 228,495 of those individuals. Of those individuals, 4,728 have unfortunately died. Our recovery rate data is based on symptom onset information, so the percentages below are based on the number of individuals we have symptom onset data for, NOT the total number of cases in the state.

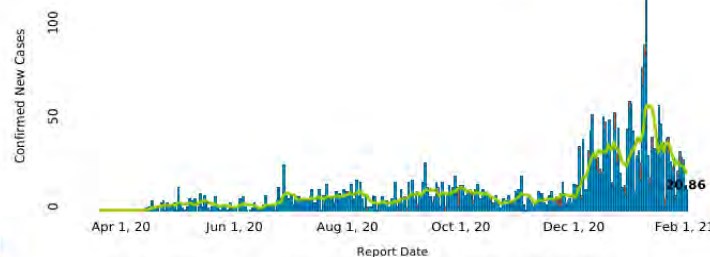
As of January 30, 2021, 88.4% of those 223,767 individuals for which we have symptom onset data are estimated to have recovered from COVID-19, and 11.6% are estimated to remain ill.

Note: These data are provisional. The estimated percent of those who may have recovered from COVID-19 is based upon the following parameters:
1. Those who reported being hospitalized were deemed as "recovered" based upon having no reported adverse outcome reported as of >32 days since their illness onset.
2. Those who reported not being hospitalized were deemed as "recovered" based upon having no reported adverse outcome reported as of >14 days since their illness onset.
3. Those where hospitalization status was unknown were deemed as "recovered" based upon having no reported adverse outcome reported as of >32 days since their illness onset.

COVID-19 Cases per Day

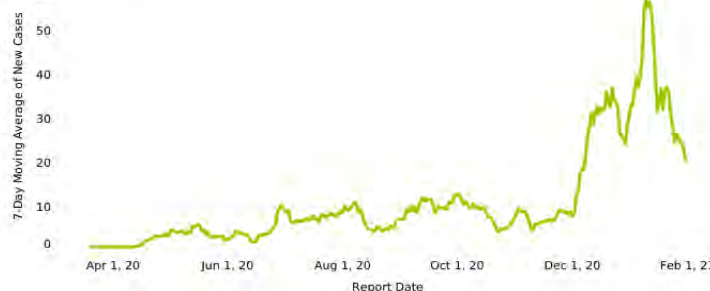
County Displayed: Dillon

Probable
Number of Confirmed Cases
7-day moving avg.



7-Day Moving Average of COVID-19 Cases, by Public Health Region

Pee Dee



COVID-19 in South Carolina

As of 11:59 PM on 1/30/2021

Number of Tests | Lee

19,019[Go to Testing](#)

Cases | Lee

1,629[Go to Cases](#)

Hospitalizations | Lee

119[Go to Hospitalizations](#)

Deaths | Lee

51[Go to Deaths](#)

Two Week Cumulative Incidence Rate

The Two-Week Cumulative Incidence Rate includes new (confirmed) cases reported in the past two weeks (January 17, 2021 - January 30, 2021) per 100,000 people. The rate describes recent incidence of COVID-19 infection to capture the potential burden of currently ill people who may be infectious and/or accessing healthcare.

Select a county to display county-specific information
Click the county again to return to the full state map



Low Incidence: 0-50

Moderate Incidence: 51-200

High Incidence: >200

State Recovery Estimate

88.4%

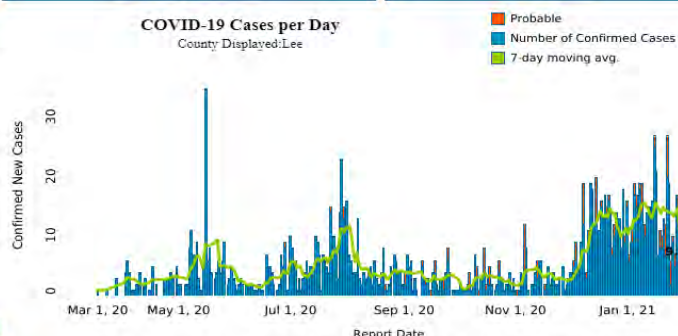
As of January 30, 2021, of the total positive cases of COVID-19 in South Carolina (445,916), we have symptom onset data (meaning, the date when a person first showed signs of illness) for 228,495 of those individuals. Of those individuals, 4,728 have unfortunately died. Our recovery rate data is based on symptom onset information, so the percentages below are based on the number of individuals we have symptom onset data for, NOT the total number of cases in the state.

As of January 30, 2021, 88.4% of those 223,767 individuals for which we have symptom onset data are estimated to have recovered from COVID-19, and 11.6% are estimated to remain ill.

Note: These data are provisional. The estimated percent of those who may have recovered from COVID-19 is based upon the following parameters:
1. Those who reported being hospitalized were deemed as "recovered" based upon having no reported adverse outcome reported as of >32 days since their illness onset.
2. Those who reported not being hospitalized were deemed as "recovered" based upon having no reported adverse outcome reported as of >14 days since their illness onset.
3. Those where hospitalization status was unknown were deemed as "recovered" based upon having no reported adverse outcome reported as of >32 days since their illness onset.

COVID-19 Cases per Day

County Displayed: Lee



7-Day Moving Average of COVID-19 Cases, by Public Health Region

Pee Dee



COVID-19 in South Carolina

As of 11:59 PM on 1/30/2021

Number of Tests | Marlboro

28,176[Go to Testing](#)

Cases | Marlboro

2,646[Go to Cases](#)

Hospitalizations | Marlboro

176[Go to Hospitalizations](#)

Deaths | Marlboro

42[Go to Deaths](#)

Two Week Cumulative Incidence Rate

The Two-Week Cumulative Incidence Rate includes new (confirmed) cases reported in the past two weeks (January 17, 2021 - January 30, 2021) per 100,000 people. The rate describes recent incidence of COVID-19 infection to capture the potential burden of currently ill people who may be infectious and/or accessing healthcare.

Select a county to display county-specific information
Click the county again to return to the full state map



Low Incidence: 0-50

Moderate Incidence: 51-200

High Incidence: >200

State Recovery Estimate

88.4%

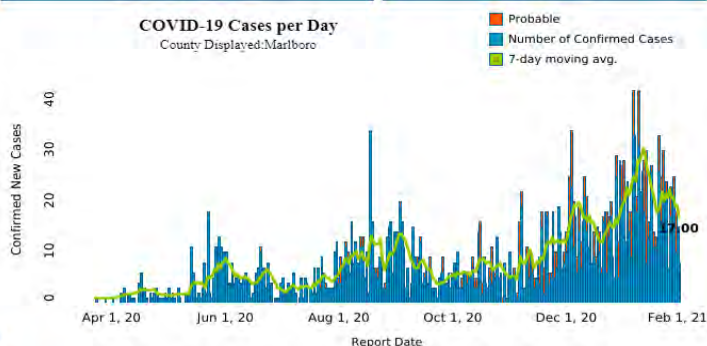
As of January 30, 2021, of the total positive cases of COVID-19 in South Carolina (445,916), we have symptom onset data (meaning, the date when a person first showed signs of illness) for 228,495 of those individuals. Of those individuals, 4,728 have unfortunately died. Our recovery rate data is based on symptom onset information, so the percentages below are based on the number of individuals we have symptom onset data for, NOT the total number of cases in the state.

As of January 30, 2021, 88.4% of those 223,767 individuals for which we have symptom onset data are estimated to have recovered from COVID-19, and 11.6% are estimated to remain ill.

Note: These data are provisional. The estimated percent of those who may have recovered from COVID-19 is based upon the following parameters:
1. Those who reported being hospitalized were deemed as "recovered" based upon having no reported adverse outcome reported as of >32 days since their illness onset.
2. Those who reported not being hospitalized were deemed as "recovered" based upon having no reported adverse outcome reported as of >14 days since their illness onset.
3. Those where hospitalization status was unknown were deemed as "recovered" based upon having no reported adverse outcome reported as of >32 days since their illness onset.

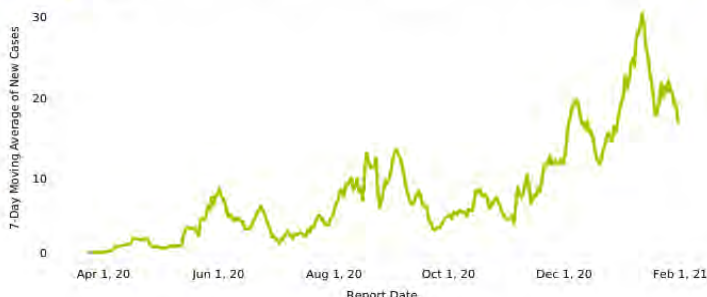
COVID-19 Cases per Day

County Displayed: Marlboro

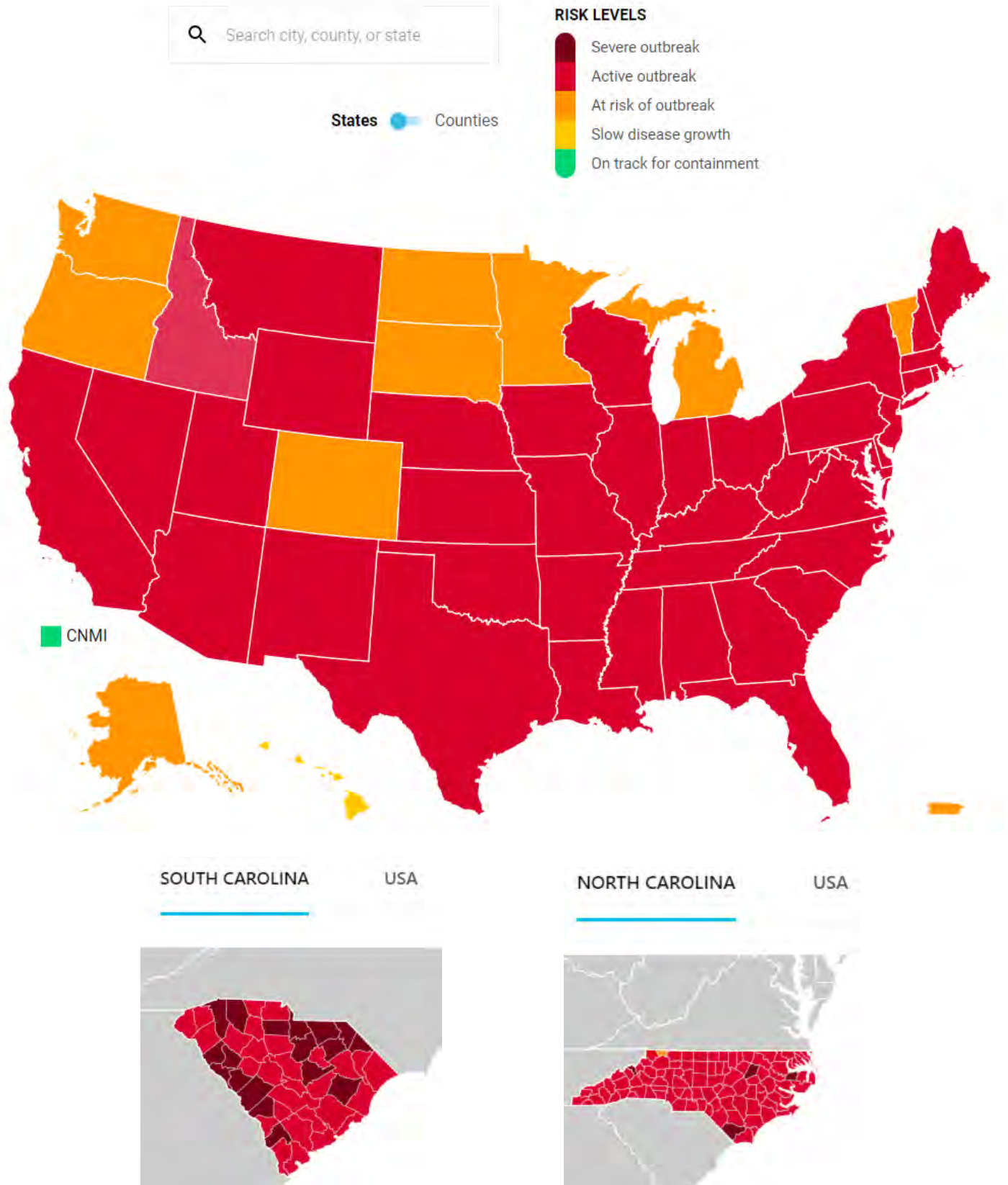


7-Day Moving Average of COVID-19 Cases, by Public Health Region

Pee Dee



US Interventions Model (from Covid Act Now)



For more detailed information on a particular state or county, visit www.covidactnow.org.

South Carolina

[SHARE](#)
[RECEIVE ALERTS](#)


COVID RISK LEVEL

Active outbreak

South Carolina is either actively experiencing an outbreak or is at extreme risk. COVID cases are exponentially growing and/or South Carolina's COVID preparedness is significantly below international standards.

DAILY NEW CASES

● **69.5** PER 100K

Dangerous number of new cases

INFECTION RATE

● **0.93**

COVID is still spreading, but slowly

POSITIVE TEST RATE

● **14.0%**

Indicates insufficient testing

ICU CAPACITY USED

● **77%**

Can likely handle a new wave of COVID

VACCINATED

● **7.0%** 1ST SHOT

[New Indicator](#)

Chesterfield County, SC

[SHARE](#)
[RECEIVE ALERTS](#)


COVID RISK LEVEL

Severe outbreak

Chesterfield County is currently experiencing a severe outbreak. Take all possible precautions to avoid exposure.

DAILY NEW CASES

● **83.9** PER 100K

Very dangerous number of new cases

INFECTION RATE

● **1.05**

COVID is still spreading, but slowly

POSITIVE TEST RATE

● **15.3%**

Indicates insufficient testing

ICU CAPACITY USED

● **Unknown**

Insufficient data to assess

VACCINATED

● **Unknown** 1ST SHOT

[New Indicator](#)

Darlington County, SC

[SHARE](#)
[RECEIVE ALERTS](#)


COVID RISK LEVEL

Severe outbreak

Darlington County is currently experiencing a severe outbreak. Take all possible precautions to avoid exposure.

DAILY NEW CASES

● **114.9** PER 100K

Very dangerous number of new cases

INFECTION RATE

● **0.96**

COVID is still spreading, but slowly

POSITIVE TEST RATE

● **17.6%**

Indicates insufficient testing

ICU CAPACITY USED

● **Unknown**

Insufficient data to assess

VACCINATED

● **Unknown** 1ST SHOT

[New Indicator](#)

Dillon County, SC

[SHARE](#)[RECEIVE ALERTS](#)

COVID RISK LEVEL

Severe outbreak

Dillon County is currently experiencing a severe outbreak. Take all possible precautions to avoid exposure.

DAILY NEW CASES

79.2 PER 100K

Very dangerous number of new cases

INFECTION RATE

0.81

Active cases are decreasing

POSITIVE TEST RATE

20.8%

Indicates dangerously little testing

ICU CAPACITY USED

Unknown

Insufficient data to assess

VACCINATED

Unknown 1ST SHOT[New Indicator](#)

Lee County, SC

[SHARE](#)[RECEIVE ALERTS](#)

COVID RISK LEVEL

Active outbreak

Lee County is either actively experiencing an outbreak or is at extreme risk. COVID cases are exponentially growing and/or Lee County's COVID preparedness is significantly below international standards.

DAILY NEW CASES

70.5 PER 100K

Dangerous number of new cases

INFECTION RATE

0.87

Active cases are decreasing

POSITIVE TEST RATE

11.4%

Indicates insufficient testing

ICU CAPACITY USED

Unknown

Insufficient data to assess

VACCINATED

Unknown 1ST SHOT[New Indicator](#)

Marlboro County, SC

[SHARE](#)[RECEIVE ALERTS](#)

COVID RISK LEVEL

Severe outbreak

Marlboro County is currently experiencing a severe outbreak. Take all possible precautions to avoid exposure.

DAILY NEW CASES

77.7 PER 100K

Very dangerous number of new cases

INFECTION RATE

0.91

COVID is still spreading, but slowly

POSITIVE TEST RATE

11.6%

Indicates insufficient testing

ICU CAPACITY USED

Unknown

Insufficient data to assess

VACCINATED

Unknown 1ST SHOT[New Indicator](#)

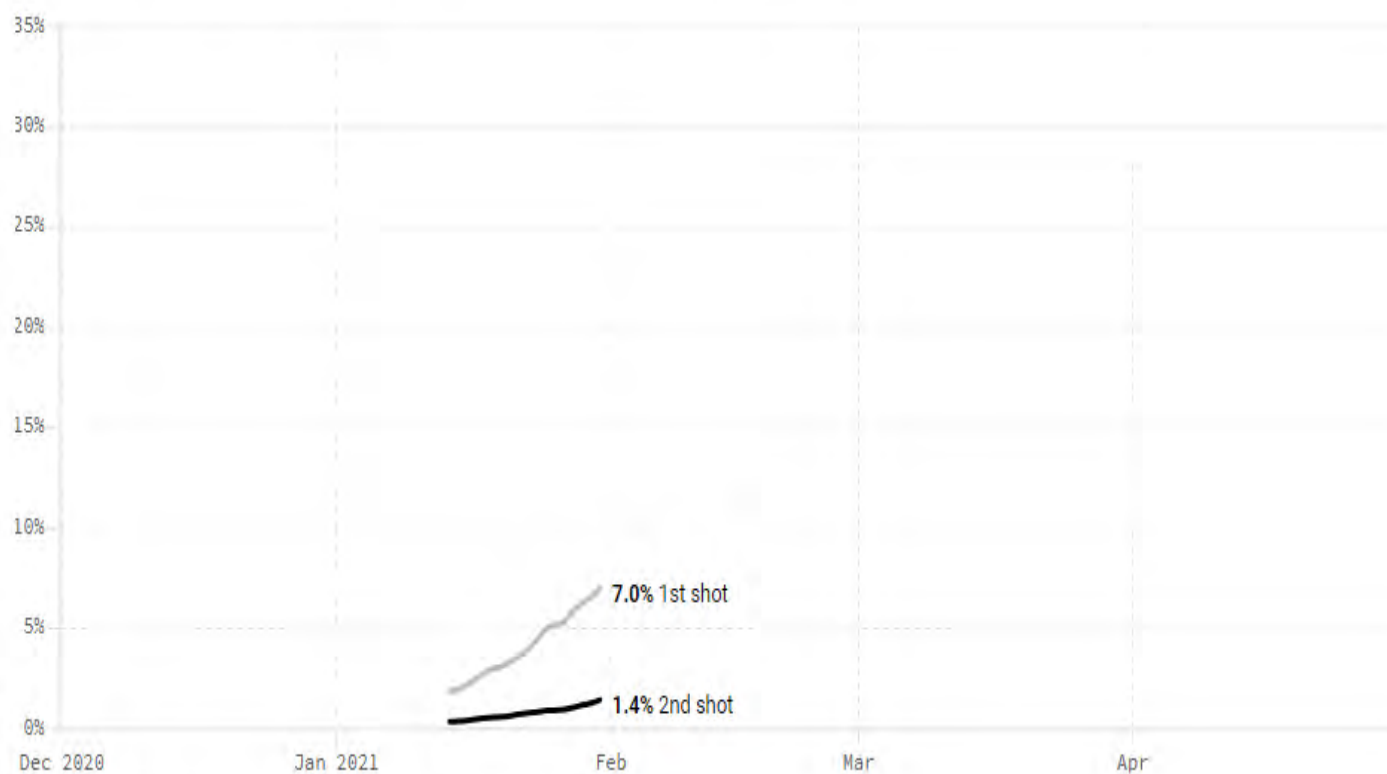
Vaccination Data

Vaccinated: 1st and 2nd shot New

SOUTH CAROLINA

[Save](#)[Share](#)

In South Carolina, 361,557 people (7.0%) have received the first shot and 74,459 (1.4%) have also received the second shot. According to the CDC, fewer than 0.001% of those who have received the first dose have experienced a severe adverse reaction, none of them deadly.

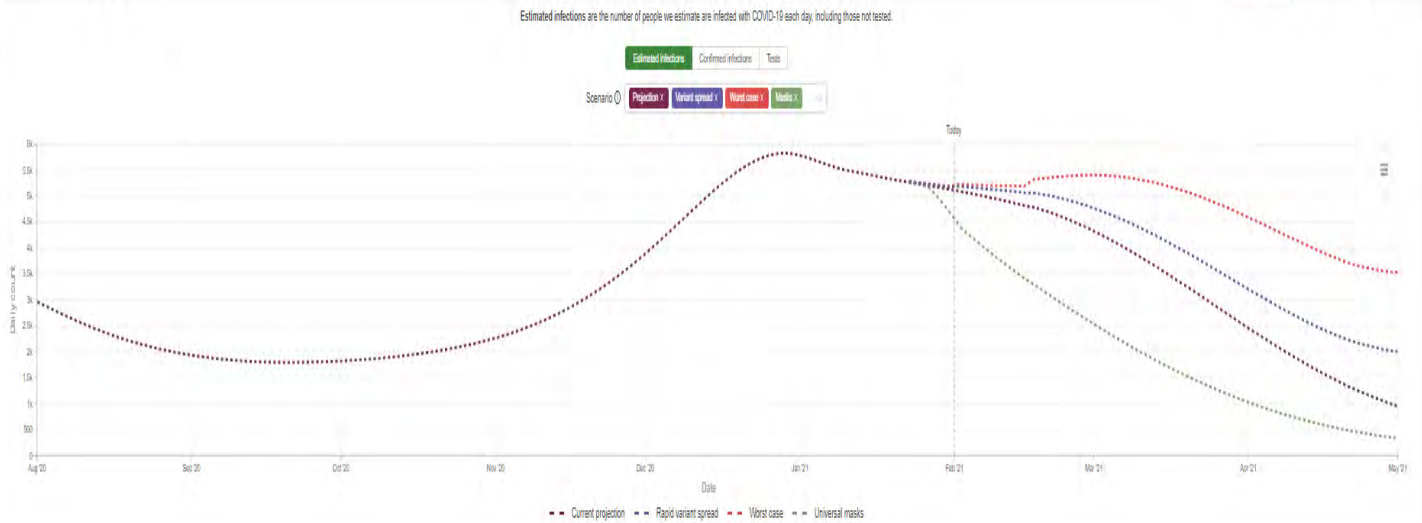


Last updated 2/1/2021. Vaccination data is provided by the [CDC](#) or retrieved from state websites. Reporting may be delayed from the time of vaccination.

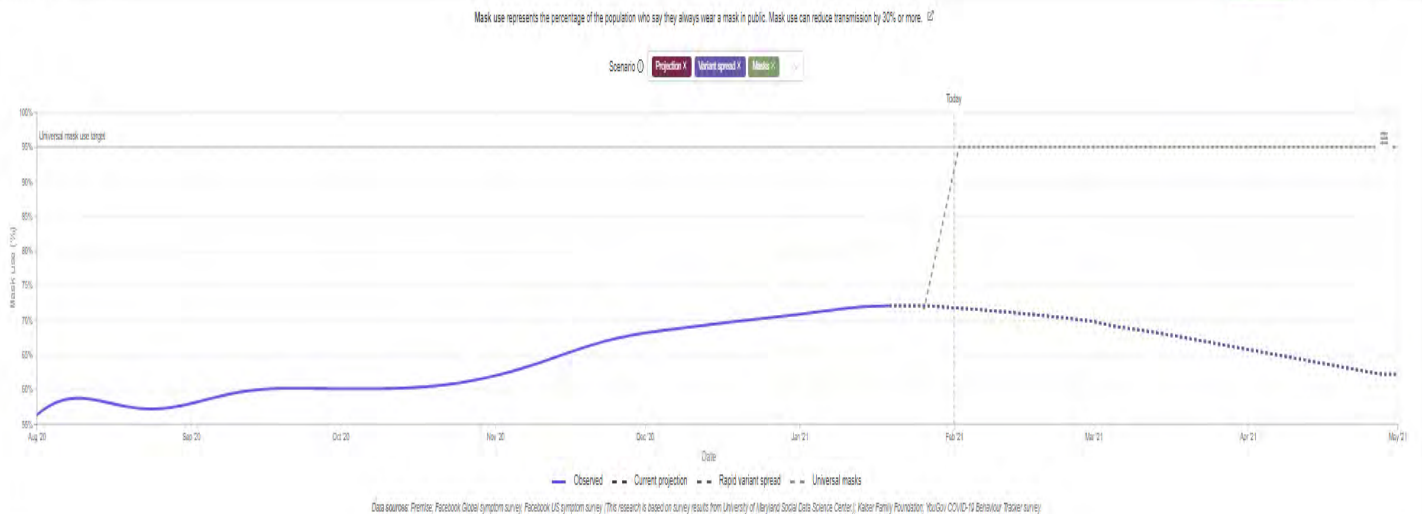
IHME Model



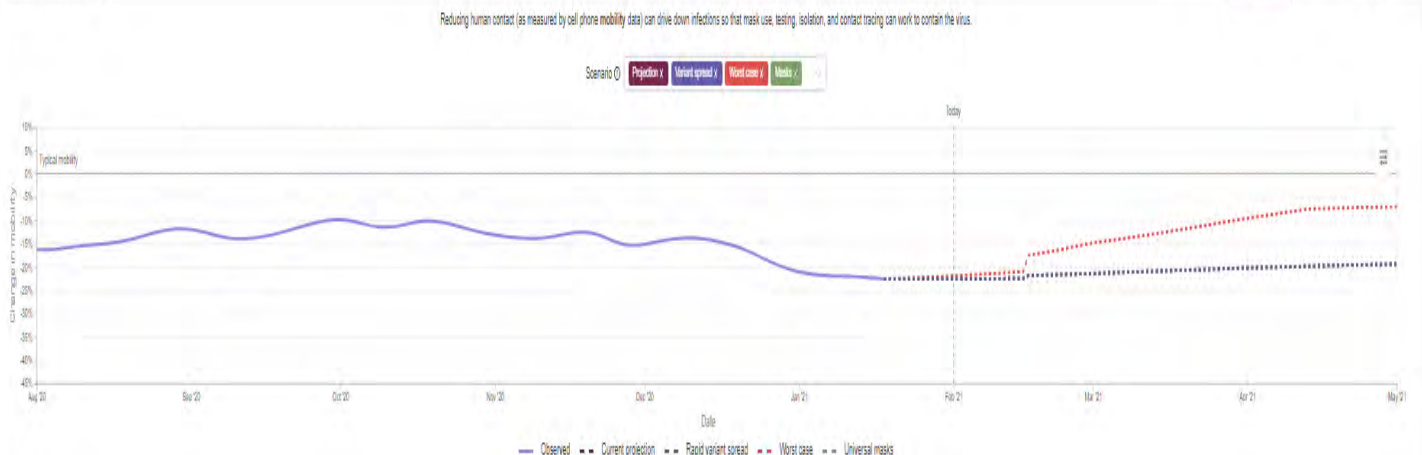
Daily infections and testing ¹²



Mask use ¹²



Social distancing ¹²



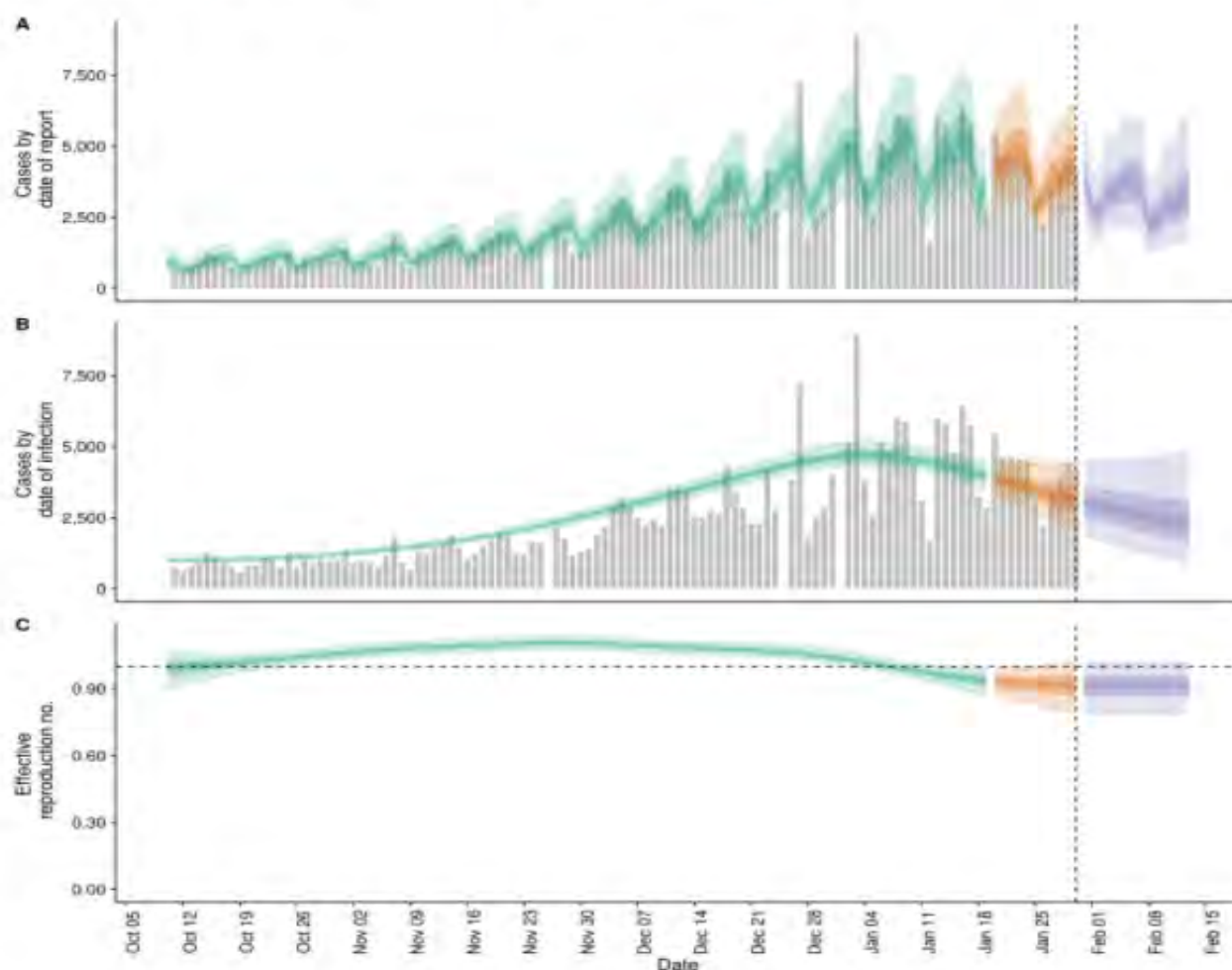
Reproduction Number Estimate

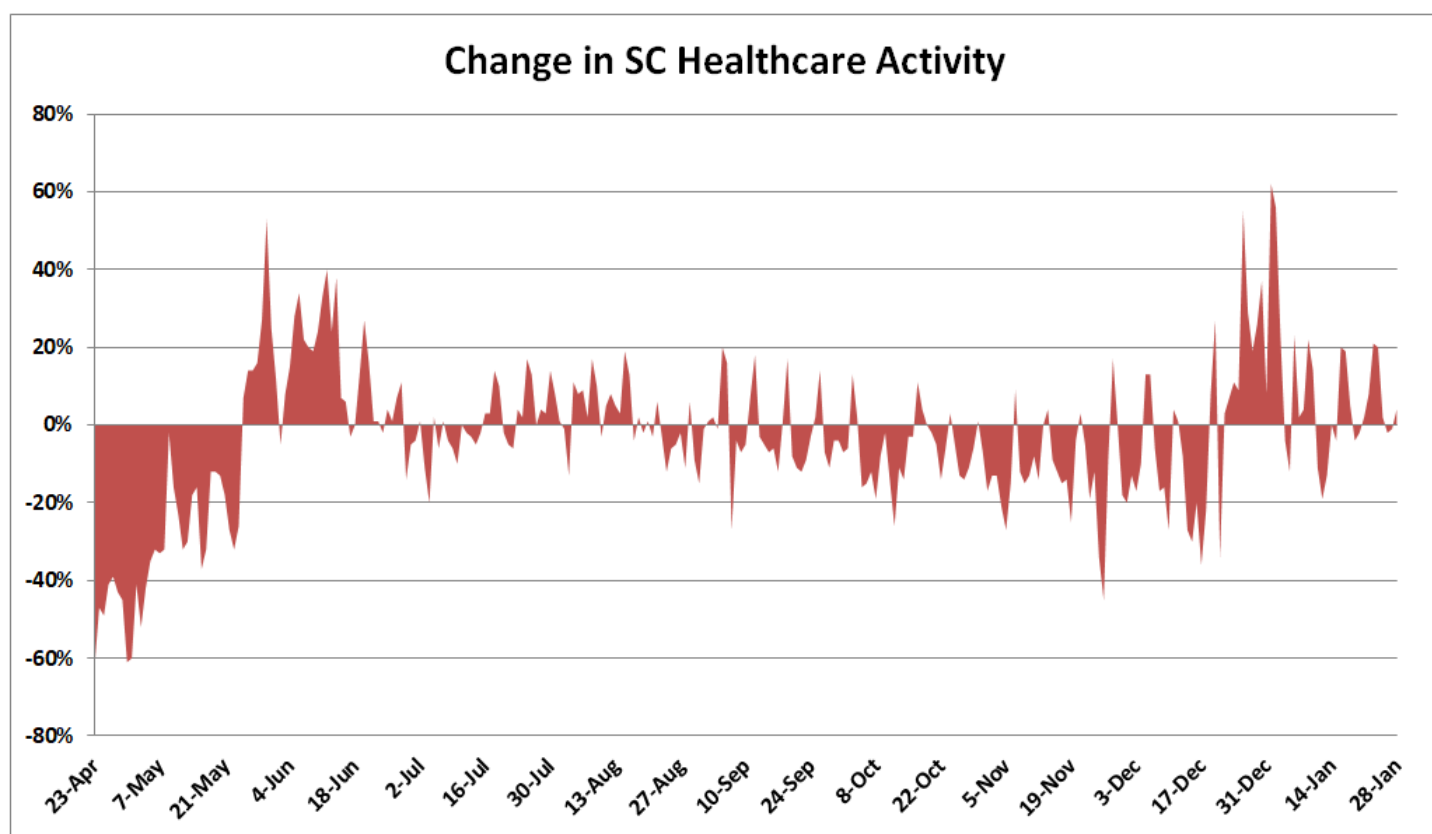
South Carolina — from Centre for Mathematical Modeling of Infectious Diseases

Table 1: Latest estimates (as of the 2021-01-30) of the number of confirmed cases by date of infection, the expected change in daily confirmed cases, the effective reproduction number, the growth rate, and the doubling time (when negative this corresponds to the halving time). The median and 90% credible interval is shown for each numeric estimate.

	Estimate
New confirmed cases by infection date	3106 (1980 – 4493)
Expected change in daily cases	Likely decreasing
Effective reproduction no.	0.92 (0.79 – 1)
Rate of growth	-0.023 (-0.061 – 0.0062)
Doubling/halving time (days)	-30 (110 – -11)

Confirmed cases, their estimated date of report, date of infection, and time-varying reproduction number estimates





Resources

CDC: <https://www.cdc.gov/coronavirus/2019-nCoV/index.html>

DHEC: <https://www.dhec.sc.gov/infectious-diseases/viruses/coronavirus-disease-2019-covid-19>

Covid19-Projections Model: <https://covid19-projections.com/>

Covid Act Now: <https://www.covidactnow.org/?s=962191>

Harvard Global Health Institute: <https://globalhealth.harvard.edu/key-metrics-for-covid-suppression-researchers-and-public-health-experts-unite-to-bring-clarity-to-key-metrics-guiding-coronavirus-response/>

IHME Model: <https://covid19.healthdata.org/united-states-of-america?view=total-deaths&tab=trend>

EPIFORECASTS: <https://epiforecasts.io/covid/posts/national/united-states/>